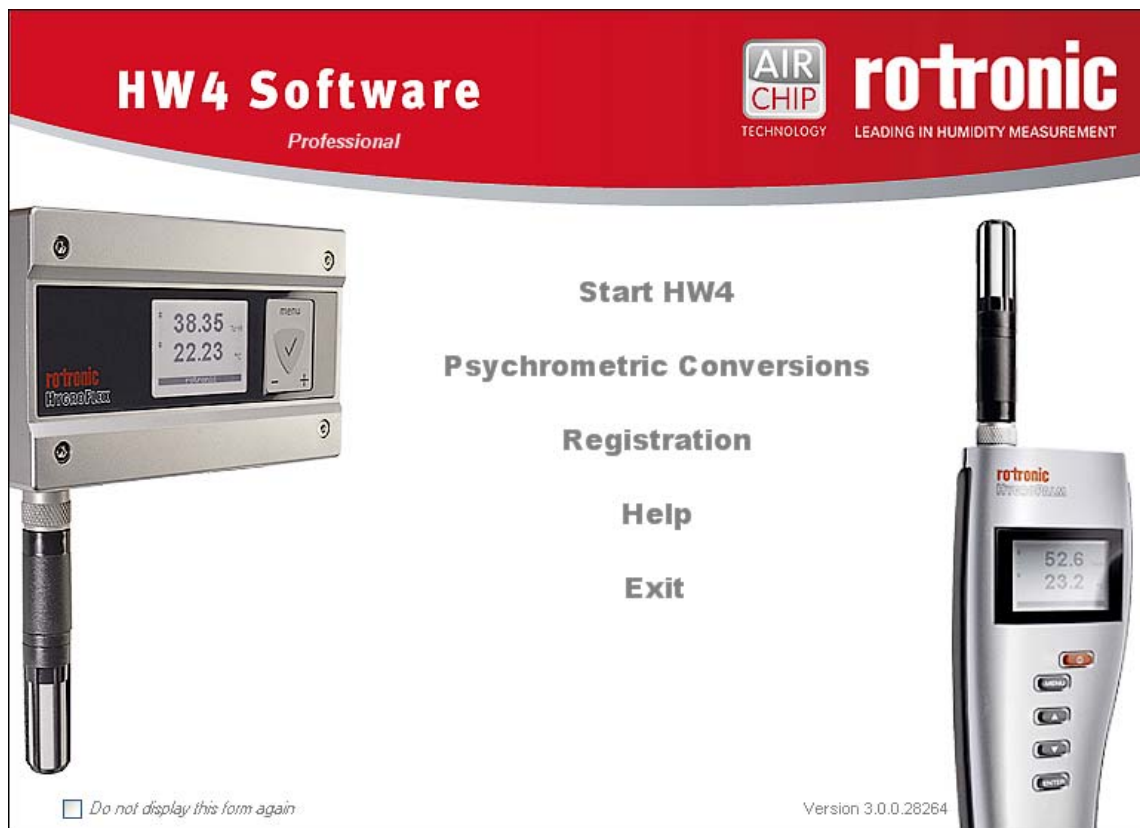


E-M-HW4v3-F2-004_10 Document code	Rotronic AG Bassersdorf, Switzerland Unit
HW4 software v.3: Device Manager HP21 Humidity Temperature Indicator Document title	Instruction Manual Document Type
	Page 1 of 16

HW4 Software version 3

Device Manager HP21 Temperature Humidity Indicator



E-M-HW4v3-F2-004_10 <small>Document code</small>	Rotronic AG Bassersdorf, Switzerland <small>Unit</small>
HW4 software v.3: Device Manager HP21 Humidity Temperature Indicator <small>Document title</small>	<p style="text-align: right;">Instruction Manual</p> <p style="text-align: right;"><small>Document Type</small></p> <hr/> <p style="text-align: right;">Page 2 of 16</p>

Table of contents

1	ORGANIZATION OF THE HW4 MANUALS	3
2	OVERVIEW	4
3	DEVICE MANAGER.....	4
3.1	Device Manager Menu Bar	5
3.2	Device Information	10
3.3	Settings	11
3.4	Alarm	12
3.5	Display	13
3.6	RH Sensor Status	14
4	DOCUMENT RELEASES	16

E-M-HW4v3-F2-004_10 Document code	Rotronic AG Bassersdorf, Switzerland Unit
HW4 software v.3: Device Manager HP21 Humidity Temperature Indicator Document title	Instruction Manual Document Type
	Page 3 of 16

1 ORGANIZATION OF THE HW4 MANUALS

The HW4 manuals are organized in separate books so as to limit the size of the individual documents. A list of the HW4 manuals is provided in document **E-M-HW4v3-DIR**

HW4 Manuals	Contents
HW4 Main Book	General software description Installation, start-up and settings Device connection methods Functions common to all devices used with HW4
Device Specific Functions 1 (separate book for each device type or model)	Legacy devices (original HygroClip technology): <ul style="list-style-type: none"> ○ HygroLog NT data logger ○ HygroFlex 2, HygroFlex 3 and M3 transmitters (same icon in device tree) ○ HygroLab 2 and HygroLab 3 bench indicators ○ HygroPalm 2 and HygroPalm 3 portable indicators ○ HygroClip DI digital interface ○ HygroClip Alarm programmable logic ○ HygroStat MB Device Manager (device configuration) and other device specific functions
Probe Adjustment 1	Humidity and temperature adjustment function common to all legacy devices (original HygroClip technology)
Device Specific Functions 2 (separate book for each device type or model)	Devices based on the AirChip 3000 technology: <ul style="list-style-type: none"> ○ HygroClip 2 (HC2) probes ○ HF3 transmitters and thermo-hygrostats ○ HF4 transmitters ○ HF5 transmitters ○ HF6 transmitters ○ HF7 transmitters ○ HL20 and HL21 data loggers ○ HP21, HP22 and HP23 hand-held indicators ○ Custom designed OEM products Device Manager (device configuration) and Data Logging functions
Probe Adjustment 2	Humidity and temperature adjustment function common to all devices based on the AirChip 3000 technology
Data Recording Function	Data recording function common to all devices based on the AirChip 3000 technology

Both the HW4 manuals (software) and device specific manuals (hardware) are available from the HW4 CD. The manuals can also be downloaded from several of the ROTRONIC web sites.

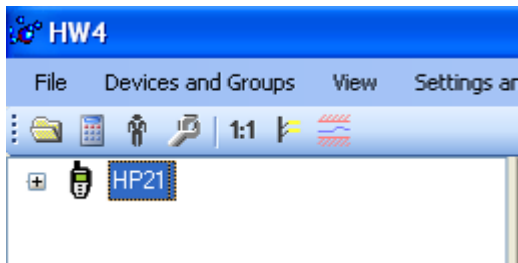
E-M-HW4v3-F2-004_10 Document code	Rotronic AG Bassersdorf, Switzerland Unit
HW4 software v.3: Device Manager HP21 Humidity Temperature Indicator Document title	Instruction Manual Document Type
	Page 4 of 16

2 OVERVIEW

This section of the HW4 manual covers only the following HW4 module:

HW4 Functional Modules for the HP21	Usage
Device Manager	<ul style="list-style-type: none"> ○ HP21 user configurable settings ○ AirChip 3000 user functions: enable and configure

- The **Data Logging** module is common to all probes and instruments based on the AirChip 3000 technology and is separately described in the HW4 manual **E-M-HW4v3-DR-001**
- The **Probe Adjustment** module is used calibrate and adjust the humidity and temperature signals. This module is common to all probes and instruments based on the AirChip 3000 technology and is separately described in the HW4 manual **E-M-HW4v3-A2-001**
- HW4 functions that are not device dependent are covered in the HW4 manual **E-IN-HW4v3-Main**.



When HW4 has detected a HP21 indicator, the HP21 appears as an icon in the left pane of the HW4 main screen. Click on the + sign to the left of the HP21 icon to display a list of the available functional modules.

3 DEVICE MANAGER

Device Manager is used to configure the HP21 and to enable, configure and access the AirChip 3000 functions.



To select the Device Manager module, click on it with the left mouse button. HW4 opens the Device Manager form.

Device Manager automatically interrogates the HP21 and downloads its current configuration.

E-M-HW4v3-F2-004_10	Rotronic AG Bassersdorf, Switzerland
Document code	Unit
HW4 software v.3: Device Manager HP21 Humidity Temperature Indicator	Instruction Manual
	Document Type
Document title	Page 5 of 16



The different sub-forms that are available within the Device Manager form are listed in a tree located on the left pane of the form. To select a sub-form, click on it with the left mouse button.

3.1 Device Manager Menu Bar

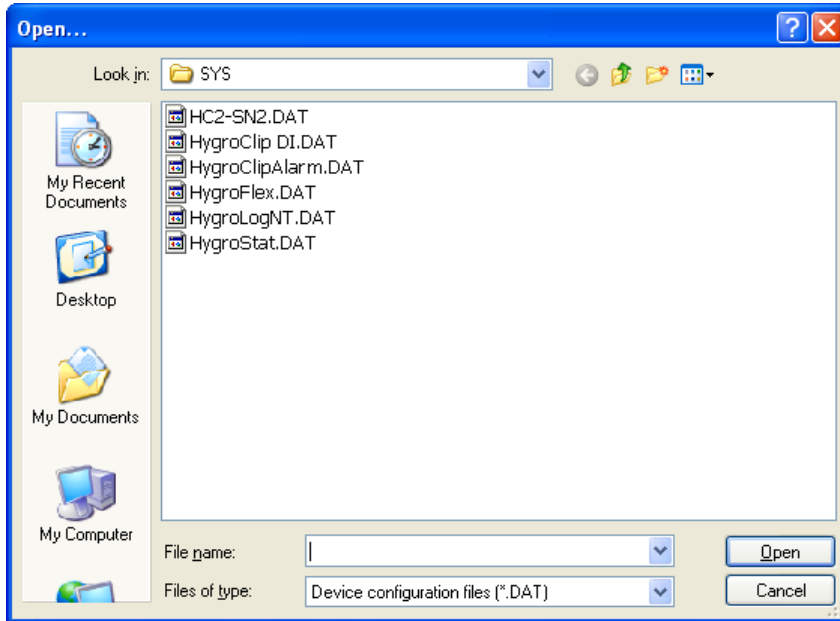
The Device Manager menu bar is located at the top of the form.

File

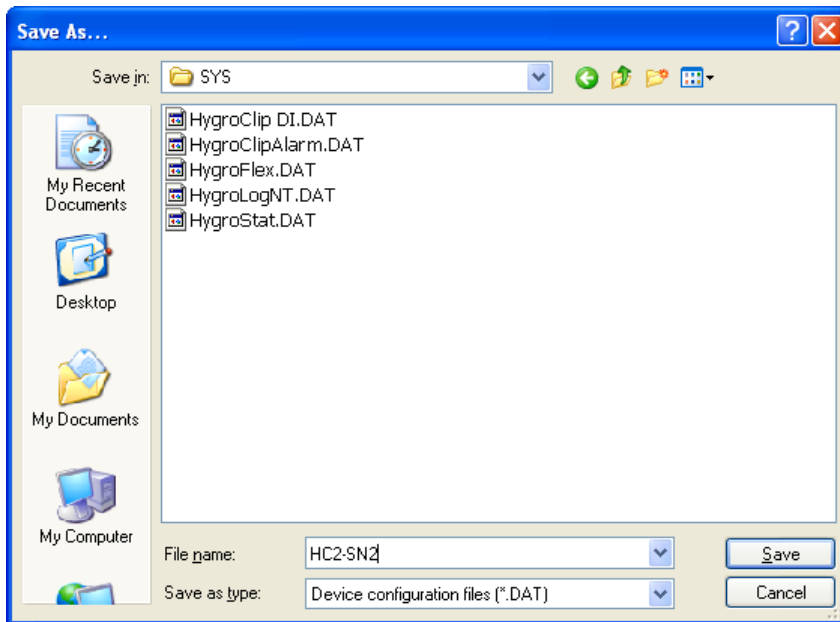
The file menu is used to save to the PC, or to retrieve from the PC, the configuration settings of the HP21. The settings are saved in an XML file with the extension DAT. Saving the configuration settings to a file is useful for several reasons:

- provides a backup when the device configuration has been changed in error
 - provides a means of quickly configuring a replacement device in the exact same manner as the original device
 - provides a means of quickly configuring a number of identical devices
- **Open:** opens the device configuration folder specified in HW4 Global Settings - File Locations Tab - and displays all available probe and device configuration files (extension DAT). Select the appropriate file and click on Open in the explorer form. The contents of the configuration file are loaded to the Device Manager form. Review the contents of the Device Manager sub-forms. Click on the Device Manager OK button to write the configuration settings to the device or click on the Cancel button to leave the device unchanged.

E-M-HW4v3-F2-004_10 Document code	Rotronic AG Bassersdorf, Switzerland Unit
HW4 software v.3: Device Manager HP21 Humidity Temperature Indicator Document title	Instruction Manual Document Type
	Page 6 of 16



- **Save As:** saves the current configuration to an XML file with the extension DAT) in the device configuration folder specified in HW4 Global Settings - File Locations Tab. If so desired, any directory and any file type may be specified.



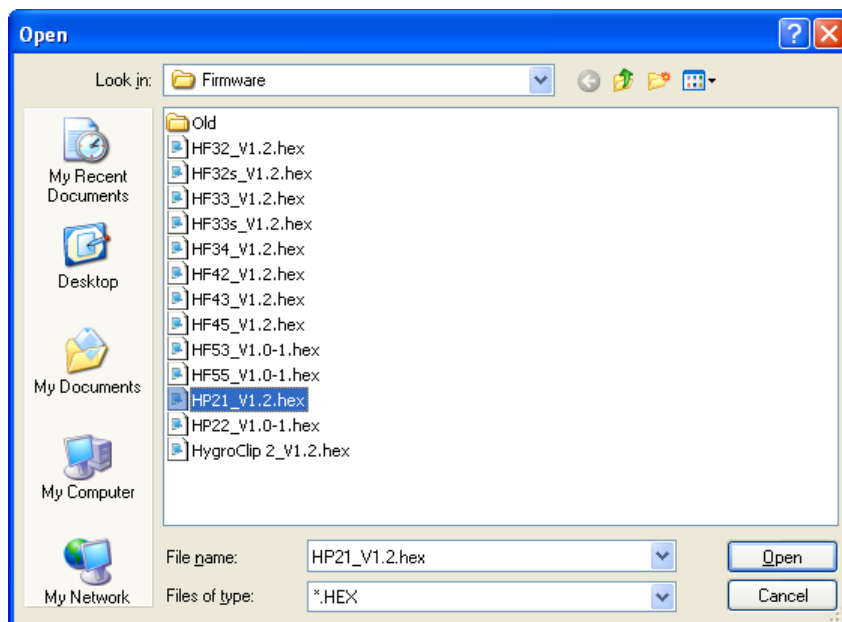
- **Exit:** exits Device Manager

E-M-HW4v3-F2-004_10 Document code	Rotronic AG Bassersdorf, Switzerland Unit
HW4 software v.3: Device Manager HP21 Humidity Temperature Indicator Document title	Instruction Manual Document Type
	Page 7 of 16

Tools

- **Firmware Update:** This tool is used to update the firmware of the HP21 after downloading a new firmware file from the ROTRONIC website to your PC. Firmware files are given a name that shows both to which device the file applies and the version number of the firmware. All firmware files have the extension HEX. The ROTRONIC website will publish firmware updates as required.

The tool opens a form that allows you to specify the folder where the firmware update file is located and to select the file. Click on OPEN to start the update process.



IMPORTANT: the HP21 must be powered during the entire process. Loss of power when the indicator is being updated may have unexpected results and prevent future operation of the HP21.

- **Generate Protocol:** generates a Device Configuration Protocol. This text file is automatically saved in the folder specified in HW4 Global Settings - File Locations Tab. If so desired, any directory and any file type may be specified. This action is not recorded in the User Event file.

E-M-HW4v3-F2-004_10 Document code	Rotronic AG Bassersdorf, Switzerland Unit
HW4 software v.3: Device Manager HP21 Humidity Temperature Indicator Document title	Instruction Manual Document Type
	Page 8 of 16

• **Communication Protocol:**

NOTE: This tool is of limited practical use with the HP21 indicator, as the HP21 does not offer a digital interface other than the service connector.

The communication protocol tool is provided for users who want to communicate directly with an AirChip 3000 device with digital interface without relying on the HW4 software and is used to select and configure one of the communication protocol options available with the AirChip 3000.

The tool opens the form shown below:



Protocol Type:

Select from one of the following options:

RO-ASCII: This is the standard (default) communication protocol used by the HP21 and by the HW4 software.

Custom: This communication protocol can be used to provide compatibility of an AirChip 3000 device with an existing digital communication system. The Custom communication protocol is limited to reading measurement data from the AirChip 3000 device. Functions such as device configuration, humidity and temperature adjustment, etc. are not supported. The Custom protocol allows RS-485 networking

Modbus: the AirChip 3000 Modbus protocol is limited to reading measurement data from the AirChip 3000 device. Functions such as device configuration, humidity and temperature adjustment, etc. are not supported by the AirChip 3000 Modbus protocol.

I2C: use of the I2C protocol is limited to HC2 probes and to some OEM products. The I2C protocol available with the AirChip 3000 is limited to reading measurement data. Functions such as device configuration, humidity and temperature adjustment, etc. are not supported by the I2C protocol

E-M-HW4v3-F2-004_10 Document code	Rotronic AG Bassersdorf, Switzerland Unit		
HW4 software v.3: Device Manager HP21 Humidity Temperature Indicator Document title	<table border="1"> <tr> <td data-bbox="938 201 1388 289" style="text-align: right;">Instruction Manual Document Type</td> </tr> <tr> <td data-bbox="938 289 1388 346" style="text-align: center;">Page 9 of 16</td> </tr> </table>	Instruction Manual Document Type	Page 9 of 16
Instruction Manual Document Type			
Page 9 of 16			

Unsolicited Mode:

Selecting this mode causes the AirChip 3000 device to send data automatically after each refresh cycle without requiring a data request. This is the only mode available with the I2C protocol.

NOTES:

- The Custom, Modbus and I2C protocols can be used only with AirChip 3000 devices with firmware version 1.3 or higher.
- For detailed instructions, see document **E-M-AC3000-CP**

Help:

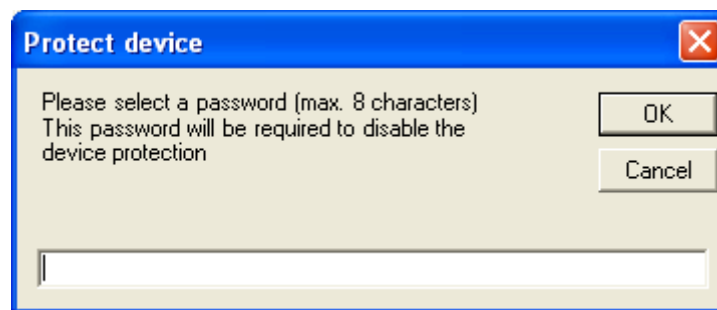
- **HW4 Help:** Opens HW4 Help
- **About HW4:** Displays the version number and ID number of HW4

E-M-HW4v3-F2-004_10 Document code	Rotronic AG Bassersdorf, Switzerland Unit
HW4 software v.3: Device Manager HP21 Humidity Temperature Indicator Document title	Instruction Manual Document Type
	Page 10 of 16

3.2 Device Information



- **RS485 Address:** click on the underlined blue link to change the HP21 address to be used in conjunction with an RS-485 network (multi-drop). Each network address should be unique and within the values of 1 to 64. Note: the default factory RS-485 address is 0. Click on the Device Manager OK button to write the new address to the HP21.
- **Device Protection:** This function is used to prevent unauthorized access to critical functions such as configuration changes, humidity and temperature adjustment, etc. Click on the underlined link next to Device Protection. HW4 opens the following form where a password can be entered (maximum 8 characters):

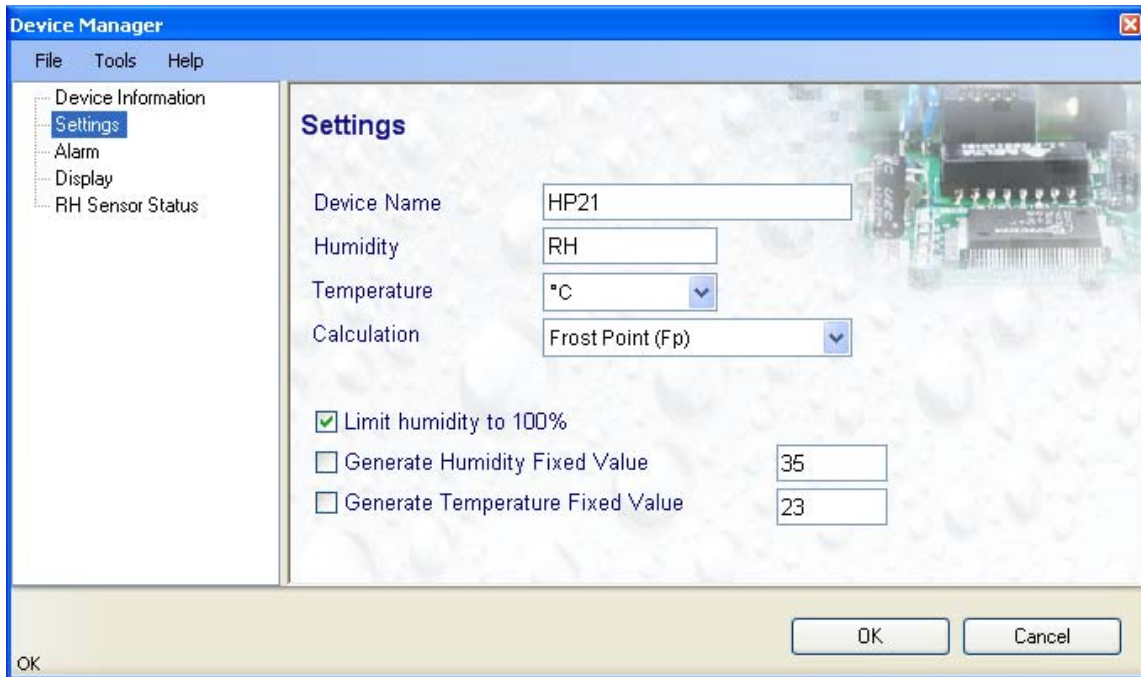


Click on the Device Manager OK button to write the new protection settings to the HP21.

FORGOT THE PASSWORD? - Power down the HP21. After powering up the HP21, you have about one minute to use the default password **!resume!** (include the exclamation marks). After one minute the default password is no longer accepted.

E-M-HW4v3-F2-004_10 Document code	Rotronic AG Bassersdorf, Switzerland Unit
HW4 software v.3: Device Manager HP21 Humidity Temperature Indicator Document title	Instruction Manual Document Type
	Page 11 of 16

3.3 Settings

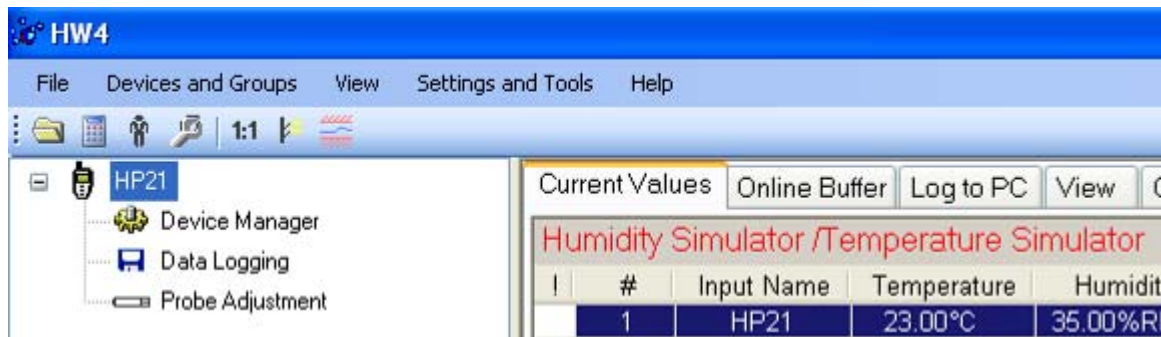


- **Device Name:** As far as possible use a unique device name (maximum 12 characters)
- **Humidity:** enter here the letters to be used after the “%” symbol used for relative humidity
- **Temperature:** Left click on the arrow to the right of the text box and select the temperature engineering unit (°C or °F).
- **Calculation:** Left click on the arrow to the right of the text box and select from the following: No calculation, Dew Point or Frost Point
- **Limit humidity to 100%:** typically, the humidity sensor gives a reading slightly above 100 %RH when condensation occurs at the surface of the sensor. Check this box to limit the maximum value of humidity to 100 %RH.
- **Generate Humidity Fixed Value / Generate Temperature Fixed Value:** place a check mark in these boxes to make the HP21 generate fixed humidity and temperature values instead of the actual measurements.

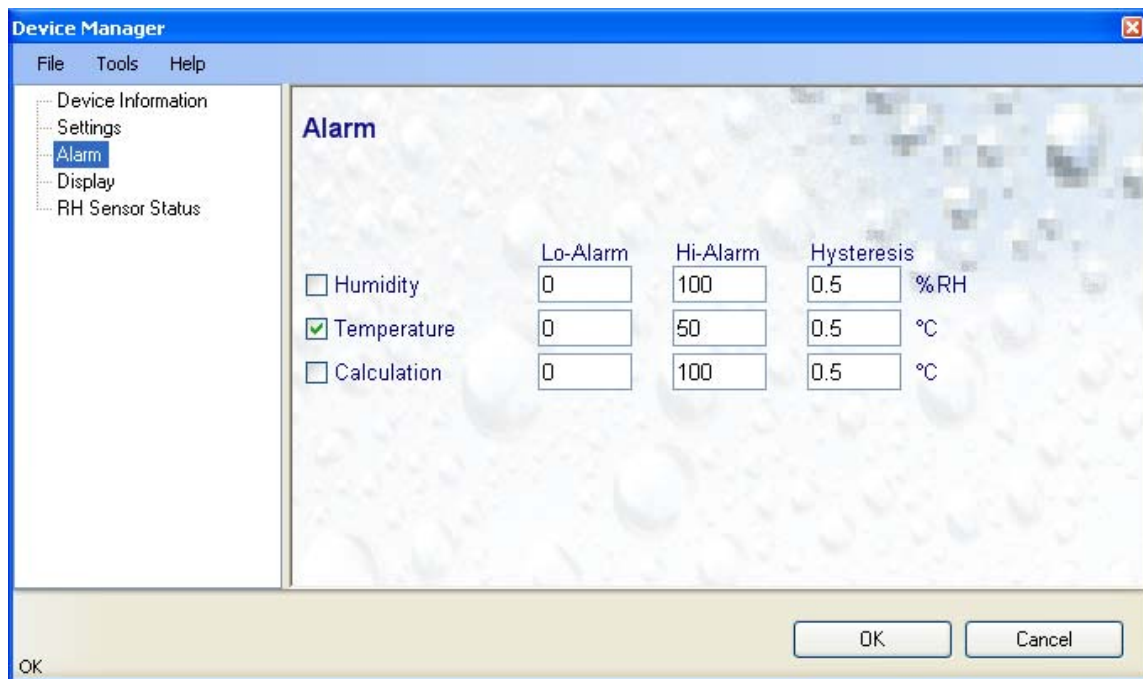
The fixed values must be with the following limits: -999.99 and 9999.99

E-M-HW4v3-F2-004_10	Rotronic AG Bassersdorf, Switzerland
Document code	Unit
HW4 software v.3: Device Manager HP21 Humidity Temperature Indicator	Instruction Manual
	Document Type
Document title	Page 12 of 16

Whenever the humidity and/or temperature signal is set to a fixed value, this is reported on the HW4 main screen (current Values tab) as shown below. The fixed value is shown in red when the indicator is not selected.



3.4 Alarm



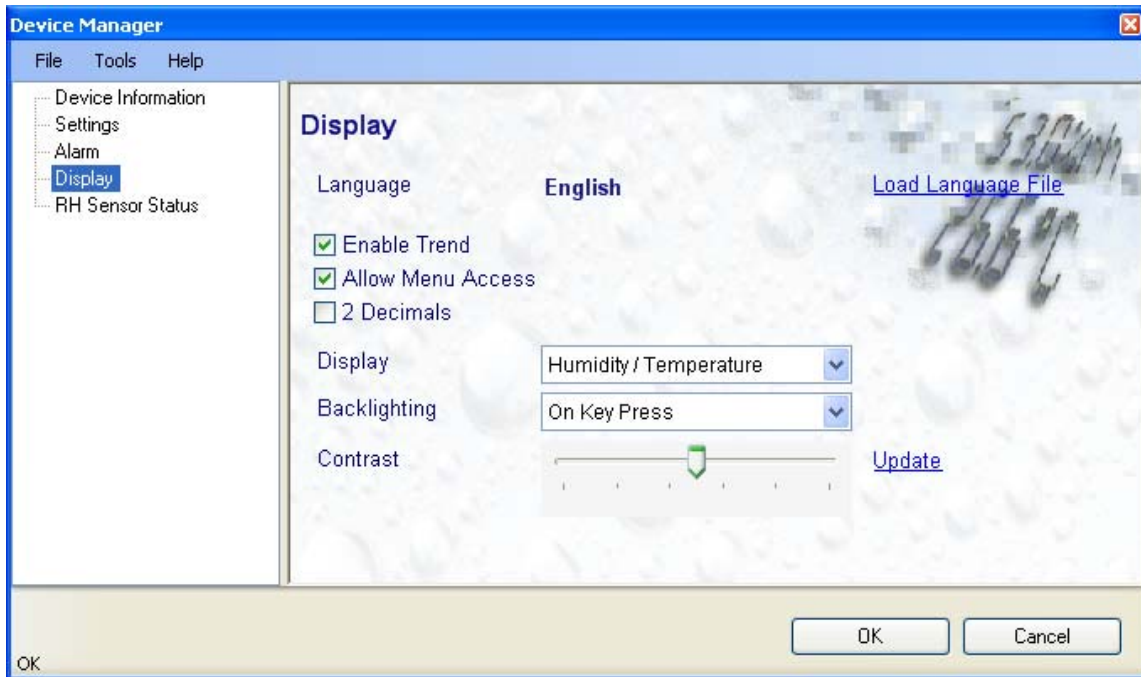
Note: This function applies to the HP21 display (an alarm symbol appears) and to the HP21 digital communication with a PC via service connector.

Alarm conditions can be defined for humidity, temperature and the calculated parameter. Values that are below the low alarm value or above the high alarm value will trigger an alarm. The value specified for the alarm function hysteresis is used for both the low and the high alarm.

All versions of HW4 will show an out-of-limits value alarm in red on the monitor screen. In addition, HW4 Professional can be configured (HW4 global settings - Alarm settings tab) to display an alarm table and generate a report whenever an out-of-limits condition occurs.

E-M-HW4v3-F2-004_10 Document code	Rotronic AG Bassersdorf, Switzerland Unit
HW4 software v.3: Device Manager HP21 Humidity Temperature Indicator Document title	Instruction Manual Document Type
	Page 13 of 16

3.5 Display



- **Load Language File:** click on this link to change the language of the HP21 internal menu by writing to the HP21 the contents of a language file present on your PC
- **Enable Trend:** check this box to enable the trend indicators on the instrument local display. Trend indication in the HW4 Current Values tab is a Global Setting of HW4 (HW4 Main Menu > Settings and Tools > View tab)
- **Allow Menu Access:** uncheck this box to prevent access to the HP21 internal menu from the keypad
- **2 Decimals:** check this box to have the display show the values with 2 decimals instead of one decimal
- **Display:** click on the arrow to the right of the box and select Humidity / Temperature or Calculation / Temperature
- **Backlighting:** click on the arrow to the right of the box and select from Always off, Always on or On Key Press
- **Contrast:** use the slider to adjust the contrast of the local LC display and click on the Update link to change the contrast. Click on the Device Manager OK button to write the new contrast setting to the HP21

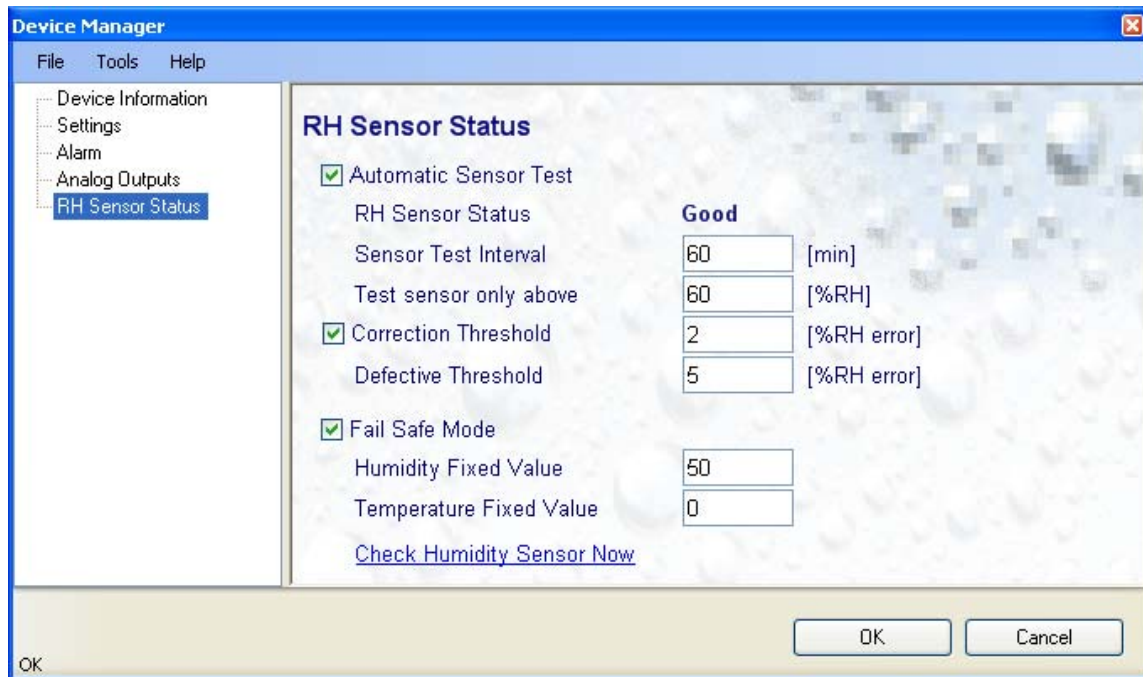
E-M-HW4v3-F2-004_10 Document code	Rotronic AG Bassersdorf, Switzerland Unit
HW4 software v.3: Device Manager HP21 Humidity Temperature Indicator Document title	Instruction Manual Document Type
	Page 14 of 16

3.6 RH Sensor Status

For a description of the RH sensor test function see document **E-T-AC3000-DF-V1**

The sensor test function uses the settings entered in the form shown below.

After each test, the sensor status is reported as Good, SQ-Tuned or Bad.



- **Automatic Sensor Test:** place a check mark in this box to enable the automatic RH sensor test.

Sensor Test Interval	Enter the desired time interval for the automatic sensor test (minutes). Recommended value: 60
Test sensor only above	The RH sensor will be tested only when the measured humidity value is equal to or higher than the value entered in this text box. Default value: 60 (may be changed by factory) Note: a different test is used to detect major sensor problems such as an open circuit or a short circuit. This test is not affected by the settings entered in this form.

Depending on the test result, the RH sensor status is reported as follows:

Not available	The sensor has not been tested. Verify the RH sensor test settings (Device Manager menu bar > Tools). The sensor will not be tested as long as the current value of %RH is below the value entered in the box labeled "Test above [%RH]"
----------------------	--

E-M-HW4v3-F2-004_10 Document code	Rotronic AG Bassersdorf, Switzerland Unit
HW4 software v.3: Device Manager HP21 Humidity Temperature Indicator Document title	Instruction Manual Document Type
	Page 15 of 16

Good	The sensor error is less than the correction threshold value. The correction offset (SQ) for sensor drift correction is automatically set to zero
SQ-Tuned	The sensor error is equal or larger than the correction threshold value but less than the defective threshold. A correction (SQ) is automatically added to the value measured by the sensor. The correction (SQ) is calculated based on the %RH currently measured by the sensor and on the coefficients A, B and C (RH sensor test settings).
Bad	The sensor error is equal or larger than the defective threshold value

The AirChip 3000 issues a digital alarm only when both of the following conditions are met: (a) the %RH measured prior to the test is at least equal to the value entered in Tools > RH Sensor Test Settings > Test above [%RH] box and (b) the humidity sensor test returns the result "Bad". When using HW4 to communicate with the indicator, the text "Bad Sensor Alarm" appears in red on the monitor screen. HW4 Professional can be configured (HW4 global settings - Alarm settings tab) to display an alarm table and generate a report whenever a device alarm condition occurs.

- **Correction Threshold:** place a check mark in this box to enable the automatic RH sensor drift compensation function.

Correction Threshold	Enter the sensor error (%RH) that will trigger a correction. Recommended value: 2 (may be changed by factory)
Defective Threshold	Enter the sensor error (%RH) above which the sensor will be considered to be defective. Recommended value: 5 (may be changed by factory)

- **Fail Safe Mode:** Place a check mark in this box to have the HP21 generate a fixed humidity or temperature value when any of the following occurs:

- RH sensor test returns the result "Bad"
- Major failure of either the humidity or temperature sensor (shorted or open sensor)

The fixed values must be with the numerical limits of -999.99 and 9999.99 and should also be within the range specified for the analog outputs.

Note: The calculated dew or frost point takes a fixed value whenever the value of both temperature and humidity is fixed.

- **Check Humidity Sensor Now:** this link works only when the indicator is configured with the automatic RH sensor test function enabled and when the measured value of humidity is above the limit entered in the RH Sensor Test Settings form. When both conditions are met, click on this link to manually run a humidity sensor test and eventually have the indicator apply a correction to the humidity signal

E-M-HW4v3-F2-004_10 <small>Document code</small>	Rotronic AG Bassersdorf, Switzerland <small>Unit</small>		
HW4 software v.3: Device Manager HP21 Humidity Temperature Indicator <small>Document title</small>	<table border="1"> <tr> <td data-bbox="938 201 1395 289" style="text-align: right;"> Instruction Manual <small>Document Type</small> </td> </tr> <tr> <td data-bbox="938 289 1395 352" style="text-align: right;"> Page 16 of 16 </td> </tr> </table>	Instruction Manual <small>Document Type</small>	Page 16 of 16
Instruction Manual <small>Document Type</small>			
Page 16 of 16			

4 DOCUMENT RELEASES

Release	Software Ver.	Date	Notes
_10	3.0.0	Jun. 18, 2010	Original release