

## Release notes

# HW4 Software Version 3.3.0

## Change control

HW4 version 3.3.0 (validated & not validated version) includes all the functions and features of HW4 version 3.2.0 with the following modifications and additions:

### Enhancements:

#### Devices

- Software version is ready for use with the new ROTRONIC low dew point probe.

#### New features

- **HW4-Lite**

HW4-Lite supports up to three connected HC2-WIN-USB devices or three HL-20 data loggers. Measurements are observed simultaneously on a PC.

- **Alarm visualization (for all versions of HW4)**

Alarms are indicated visually with different colors depending on their priority.

Default settings:

- Priority 1 – red
- Priority 2 – orange
- Priority 3 – yellow

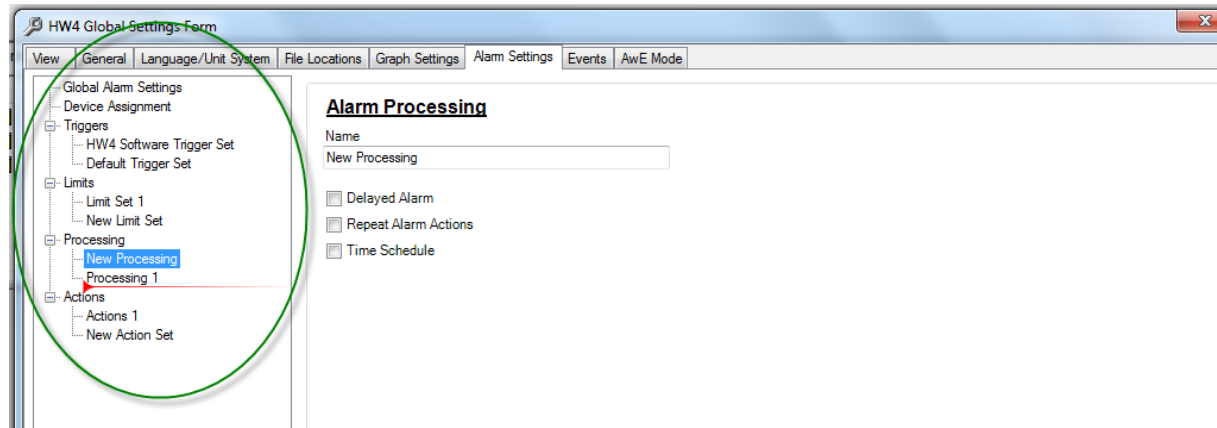
The default colors can be changed by the user.

- **Search function for alarm table (for all versions of HW4)**

- Enables alarm search by text.
- Enables alarm search by date.

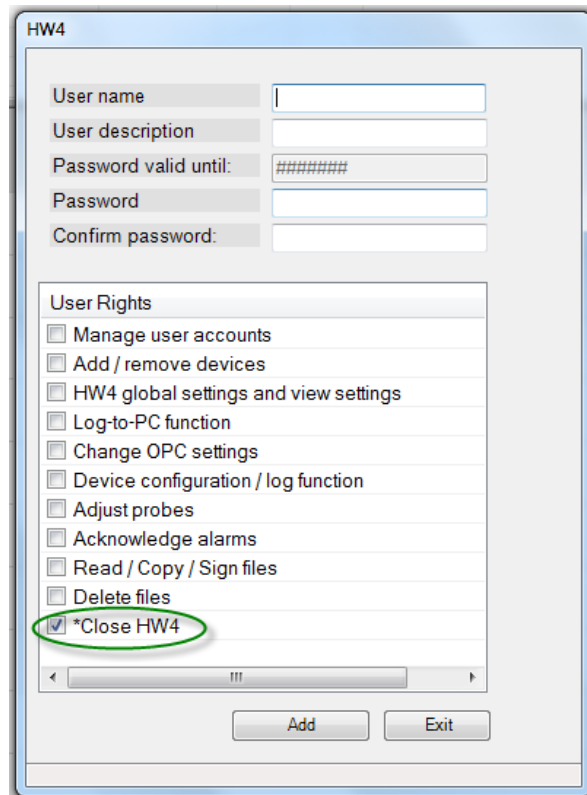
- **Alarm overview in Global Settings (for all versions of HW4)**

Alarms can be organized by “drag & drop” in global alarm settings.



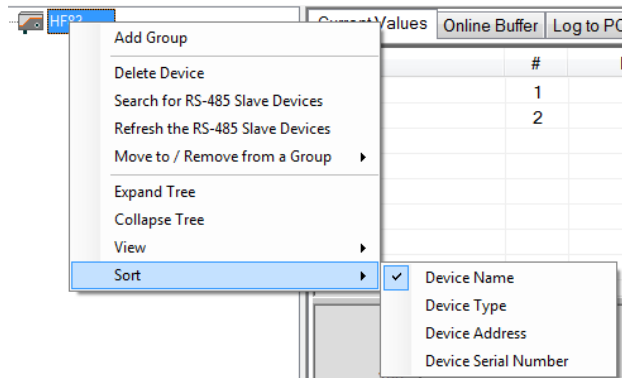
- **Shutdown protection (for all versions of HW4)**

User rights for HW4 shutdown can be set within User Management. If enabled, a password is required to close HW4 software.



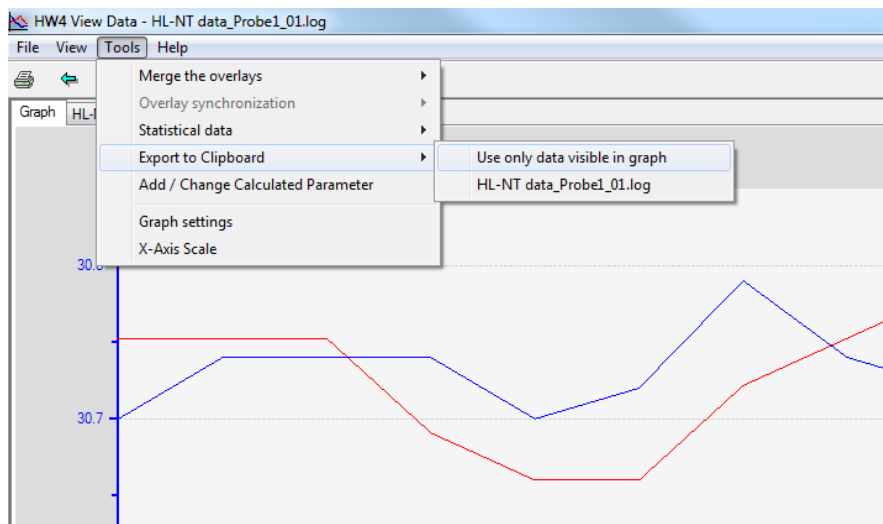
- **Sorting of devices in groups and subgroups (for all versions of HW4)**

Devices in subgroups can be created and organized by device name, address, type or description.



- **Export of PC screen visible data for .LOG files (for all versions of HW4)**

HW4 allows the direct export of currently visible data to the Clipboard, the data can then be pasted into a .xls (Excel) file.



- **Temperature adjustment of wireless loggers (for all versions of HW4)**

(LOG-PT1000-RC / LOG-PT1000-RC-US / LOG-PT1000-ET030-RC / LOG-PT1000-30-RC-US)

The Pt100 temperature sensor can be adjusted using HW4 software.

## Bugs fixed:

- **SMS alarm**  
Device name is included in the text message.
- **E-mail alarm**  
SSL server can be used for e-mail alarming.
- When Group Adjustment is used the protocol will be saved in the correct directory.

## Known bugs:

- **Wireless data loggers:** The device “low alarm” limit for temperature can’t be changed. Enabling / disabling is possible.

**Affected devices:** all types of LOG-HC2-xx-RC and LOG-PT1000-xx-RC

### Workarounds:

- Use HW4 v3.2.1 or v3.2.0 in the application.
- Use HW4 v3.2.1 or v3.2.0 to change the “low alarm” limit and use v3.3.0 for monitoring.
- Instead of the device alarm use software alarms for monitoring (Online Monitoring is not recommended due to battery lifetime). Software alarm limits in local logger files will not be displayed.

## Notes:

- none

## Windows Compliance:

- Windows XP (32 & 64-bit), Windows Vista (32 & 64-bit), Windows 7 (32 & 64-bit), Windows 8 (32 & 64-bit)