

E-M-AC3000-CP_25 Document code	Rotronic AG Bassersdorf, Switzerland Unit				
AirChip 3000 Communication Protocol Options Document title	<table border="1"> <tr> <td data-bbox="906 201 1323 289"></td> <td data-bbox="1323 201 1494 289"> Description Document Type </td> </tr> <tr> <td colspan="2" data-bbox="906 289 1494 354"> Page 1 of 45 </td> </tr> </table>		Description Document Type	Page 1 of 45	
	Description Document Type				
Page 1 of 45					

AirChip 3000 Communication Protocol Options



E-M-AC3000-CP_25	Rotronic AG Bassersdorf, Switzerland
Document code	Unit
AirChip 3000 Communication Protocol Options	Description
Document title	Document Type
	Page 2 of 45

Table of Contents

1	OVERVIEW	3
2	AIRCHIP 3000 DIGITAL INTERFACE	5
2.1	Communication schematic	5
2.2	Response time	5
3	RO-ASCII PROTOCOL.....	6
3.1	Physical interface	7
3.2	Command overview	8
3.3	General command structure.....	9
3.4	RDD command: read values	12
3.5	REN command: change the RS-485 address.....	15
3.6	HCA command: probe adjustment.....	16
3.7	LGC command: status and programming of the data recording function	19
3.8	ERD command: read recorded data	22
3.9	TID command: set date and time for HL20	25
3.10	HRD command: read out data memory of HL20.....	26
3.11	Configuration with the HW4 software.....	27
4	MODBUS PROTOCOL.....	28
4.1	Physical interface	28
4.2	Data request structure.....	29
4.3	Response structure and data encoding	30
4.4	Configuration with the HW4 software.....	32
5	I2C PROTOCOL	33
5.1	Physical interface	34
5.2	Data string structure and data encoding.....	35
5.3	Configuration with the HW4 software.....	37
6	CUSTOM PROTOCOL	39
6.1	Physical interface	39
6.2	Data request structure.....	40
6.3	Configuration with the HW4 software.....	41
6.4	Response structure	43
7	DEVICE IDENTIFIERS	44
8	DOCUMENT RELEASES	45

E-M-AC3000-CP_25 Document code	Rotronic AG Bassersdorf, Switzerland Unit
AirChip 3000 Communication Protocol Options Document title	Description Document Type Page 3 of 45

1 OVERVIEW

The AirChip 3000 is a programmable, custom designed integrated circuit developed by ROTRONIC and is at the core of an entire family of humidity-temperature measuring devices:

- HygroClip 2 (HC2) probes
- HC2-AW / HC2-AW-USB probes
- HF3 transmitters and thermo-hygrostats series
- HF4 transmitter series
- HF6 transmitter series
- HL20 data logger
- HP21 hand-held indicator
- HygroMet4
- Custom designed OEM products

RO-ASCII is the default communication protocol used by the HW4 software to communicate with an AirChip 3000 device. Users can always use this protocol to communicate directly with an AirChip 3000 device without HW4. Starting with firmware version 1.3, the AirChip 3000 offers 3 additional communication protocol options:

- **MODBUS:** This protocol is applicable to all AirChip 3000 (**except HC2-AW probes**) devices that can be connected to a RS-485 network
- **I2C:** This protocol complies with the standard I2C protocol and is meant for OEM users. When set to use the I2C protocol, the AirChip 3000 always act as master writing to the bus. The AirChip 3000 does not allow the networking of several devices and is limited to a one way communication where the AirChip 3000 device automatically sends data during each refresh interval to an external device with I2C input. The I2C protocol option is available with the HygroClip 2 probes (HC2) and with some OEM products.
- **Custom:** this is a simple protocol that can be customized by the user to provide compatibility of the AirChip 3000 device with an exiting communication system. The Custom protocol is applicable to all AirChip 3000 devices with a digital interface and allows RS-485 networking.

Important:

It is important to note that the Modbus, I2C and Custom protocols available with the AirChip 3000 devices are limited to reading measurement data from the AirChip 3000 device. Functions such as device configuration, humidity and temperature adjustment, etc. are not supported by these protocols.

E-M-AC3000-CP_25 Document code	Rotronic AG Bassersdorf, Switzerland Unit			
AirChip 3000 Communication Protocol Options Document title	<table border="1"> <tr> <td data-bbox="906 205 1328 289" rowspan="2"></td> <td data-bbox="1328 205 1490 289"> Description Document Type </td> </tr> <tr> <td data-bbox="906 289 1490 352" style="text-align: center;"> Page 4 of 45 </td> </tr> </table>		Description Document Type	Page 4 of 45
	Description Document Type			
	Page 4 of 45			

IMPORTANT:

- The HW4 software is required to set the AirChip 3000 device to use any protocol other than RO-ASCII
- When communicating with the HW4 software the AirChip 3000 device automatically switches to the RO-ASCII protocol (ROTRONIC standard).
- After using HW4 to configure the AirChip 3000 device to use one of the available protocols power down the device. When the device is powered up, it automatically starts using the selected communication protocol as long as it is not communicating with the HW4 software.

E-M-AC3000-CP_25 Document code	Rotronic AG Bassersdorf, Switzerland Unit
AirChip 3000 Communication Protocol Options Document title	Description Document Type Page 5 of 45

2 AIRCHIP 3000 DIGITAL INTERFACE

AirChip 3000 Digital interface	
Interface type (default)	UART (Universal Asynchronous Receiver Transmitter)
Organization	Dialog, duplex
Default configuration	Baud rate : 19200 Parity : none Data bits : 8 Stop bits : 1 Flow Control : none
Tolerance	3 %
Baud rate configuration:	No
Logical levels	Logical 0: $\leq 0.3V * VDD$ Logical 1: $\geq 0.8V * VDD$
Maximum cable length	5 m (16.4 ft) w/o signal booster

Note: a number of devices based on the AirChip 3000 also feature a RS-485 interface

2.1 Communication schematic

Communication between the initiator (PC) and the measurement device must also follow the request-answer schematic. It's not allowed to send a second request before the answer from the measurement device is received.

2.2 Response time

The maximal response time of all devices described in this document is 500 ms.

E-M-AC3000-CP_25 Document code	Rotronic AG Bassersdorf, Switzerland Unit				
AirChip 3000 Communication Protocol Options Document title	<table border="1"> <tr> <td data-bbox="906 205 1328 289"></td> <td data-bbox="1328 205 1490 289"> Description Document Type </td> </tr> <tr> <td colspan="2" data-bbox="906 289 1490 352"> Page 6 of 45 </td> </tr> </table>		Description Document Type	Page 6 of 45	
	Description Document Type				
Page 6 of 45					

3 RO-ASCII PROTOCOL

RO-ASCII is the default communication protocol used by both the AirChip 3000 devices and the HW4 software. This document describes only some of the commands and functions available with the RO-ASCII communication protocol. In particular, the following functions are not covered here:

- Device configuration
- 2-point temperature adjustment

These functions can be accessed with the ROTRONIC HW4 software.

Users who require additional functionality should contact ROTRONIC. Please note that some of the commands and functions not included in this document require a certain amount of computations to be carried out by a device external to the AirChip 3000 (such as a PC). A typical example is the 2-point temperature adjustment function of the AirChip 3000.

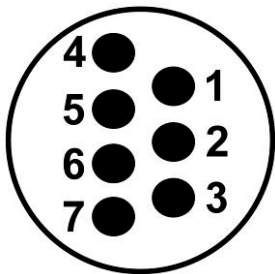
E-M-AC3000-CP_25 Document code	Rotronic AG Bassersdorf, Switzerland Unit
AirChip 3000 Communication Protocol Options Document title	Description Document Type Page 7 of 45

3.1 Physical interface

HC2 probe: Use a cable that converts the probe UART interface into an existing PC interface or Ethernet port (for example cable AC3001 allows connection to a USB port). The function of the 7 pins of the HygroClip 2 probe connector is the same as in the RO-ASCII mode.

Pin-out diagram: Probe connector (7-pin male – looking at probe)

RO-ASCII mode



Pin #	Name	Function
1	VDD (+)	3.3...5 VDC
2	GND	Power ground and digital signal ground
3	RXD	UART
4	TXD	UART
5	Out 1 analog (+)	Humidity 0...100%RH (default)
6	Out 2 analog (+)	Temperature -40...60°C (default)
7	AGND	Analog signal ground

Other AirChip 3000 devices: Depending on the model, instruments based on the AirChip 3000 feature a USB interface, a RS-485 interface or an Ethernet interface.

E-M-AC3000-CP_25 Document code	Rotronic AG Bassersdorf, Switzerland Unit
AirChip 3000 Communication Protocol Options Document title	Description Document Type Page 8 of 45

3.2 Command overview

The following RO-ASCII commands are described in this document:

Command	Function
RDD	Read the humidity and temperature measured by the HygroClip 2 device, the calculated parameter (dew or frost point) and additional information such as: engineering unit, trend and out-of-limits alarm flag for each individual parameter, general alarm Byte for the device, device type, firmware version, serial number and device name
REN	Change the RS-485 address of the device
HCA	Adjust the device against a reference temperature value (1-point adjustment only). Adjust the device against one or several humidity reference values (1-point and multi-point adjustment). Document E-T-2P TempAdj is available from ROTRONIC for users who are interested in doing a 2-point temperature adjustment.
LGC	Program the device data recording function
ERD	Download the recorded humidity and temperature data (the calculated parameter is not recorded)
TID	HL20 only: set of date and time
HRD	HL20 only: read out of device memory

The RO-ASCII communication protocol uses exclusively ASCII characters. With the exception of the ERD command, most commands and answers requires very little formatting.

E-M-AC3000-CP_25 Document code	Rotronic AG Bassersdorf, Switzerland Unit
AirChip 3000 Communication Protocol Options Document title	Description Document Type Page 9 of 45

3.3 General command structure

RS485	„{“	ID	Adr	Command	Data	Chksum	CR
-------	-----	----	-----	---------	------	--------	----

RS485 | (vertical bar) this character is required only when the device being addressed is a RS-485 slave (the string is to be passed to the device by another device such as the master or another slave in the RS-485 multi-drop).

An AirChip 3000 device may be directly connected by RS-485 to a device such as an Ethernet Server. In that case the AirChip 3000 device is a master device. Do not use the vertical bar | as the start character when sending a data request to a master device.

{ Beginning of the string (curly bracket)

ID Device type identifier (one ASCII character). Use *space* for unknown identifier (all devices will respond, collisions may occur).

Adr RS485 Address of the device (00-64). Use *99* for unknown address (any address will respond, collisions may occur).

Command 3 ASCII characters

Data ASCII characters, each individual data element is followed by a semi-colon (separator)

Chksum Checksum. When sending a data request this can be replaced with a string end } (curly bracket)

CR End of the string (Carriage Return)

- Leading and trailing space characters are allowed
- The decimal symbol is always a dot

E-M-AC3000-CP_25 Document code	Rotronic AG Bassersdorf, Switzerland Unit				
AirChip 3000 Communication Protocol Options Document title	<table border="1"> <tr> <td data-bbox="906 205 1328 289" style="width: 70%;"></td> <td data-bbox="1328 205 1490 289" style="text-align: right;">Description</td> </tr> <tr> <td colspan="2" data-bbox="906 289 1490 352" style="text-align: right;">Page 10 of 45</td> </tr> </table>		Description	Page 10 of 45	
	Description				
Page 10 of 45					

Notes:

- **RS485**

The vertical bar | is used to indicate that the command string is to be passed to another device connected by RS-485 (multi-drop network with a master and one or several slaves). Upon receiving the string, the master device strips the vertical bar and sends the rest of the string to the RS-485 driver.

Depending on the device, the stripped string may also be sent to the PC. The software used by the PC should be designed so as not to confuse this string with an answer.

- **Adr**

Address 99 can be used temporarily to communicate with a single device of unknown address. This address causes the device to answer regardless of its address. The actual device address is returned as part of the answer string. Address 99 should not be used when several devices are connected to a network.

E-M-AC3000-CP_25 Document code	Rotronic AG Bassersdorf, Switzerland Unit
AirChip 3000 Communication Protocol Options Document title	Description Document Type Page 11 of 45

o **Checksum character calculation**

Hex value of checksum character = [(sum of all character Hex values) AND 0x003F] + 0x0020

Note: AND = bitwise AND logical operation

This is equivalent to the following Visual Basic code lines:

Private Function Checksum(ByVal Data As String) As Char

Dim Sum, I As Integer

For I = 0 To Data.Length - 1

Sum += Asc(Data.Chars(i))

Next

Checksum = Chr(Sum Mod 64 + 32)

End Function

NOTE: The following characters are not used for the checksum calculation: RS485 character (I), the String end (}) and (CR). The initial (I) must be counted.

Example: checksum character for the string {F09RDD = \$

E-M-AC3000-CP_25 Document code	Rotronic AG Bassersdorf, Switzerland Unit			
AirChip 3000 Communication Protocol Options Document title	<table border="1" style="width: 100%; border-collapse: collapse;"> <tr> <td style="text-align: right; vertical-align: top;">Description</td> </tr> <tr> <td style="text-align: right; vertical-align: top;">Document Type</td> </tr> <tr> <td style="text-align: center; vertical-align: middle;">Page 12 of 45</td> </tr> </table>	Description	Document Type	Page 12 of 45
Description				
Document Type				
Page 12 of 45				

3.4 RDD command: read values

Returns the measured and calculated values as well as the information necessary to interpret the data (calculated parameter type, engineering units, status, serial number and name of the device, etc.)

Command format:

{	ID	Adr	RDD	Chksum or }	CR
---	----	-----	-----	-------------	----

Answer format:

{	ID	Adr	rdd	Data	Chksum
---	----	-----	-----	------	--------

E-M-AC3000-CP_25	Rotronic AG Bassersdorf, Switzerland
Document code	Unit
AirChip 3000 Communication Protocol Options	Description
Document title	Document Type
	Page 13 of 45

The data are returned according to the following structure:

Example	Type	Description
1..3	Byte	Probe type (1= digital probe, 2=analog probe, 3=pressure probe)
1234.56	Float	Relative humidity or analog value
%RH	String	Humidity or analog value engineering unit
0..1	Bool	Humidity or analog value alarm (out-of-limits)
+	Char	Humidity or analog value trend (+,-,= or “ ”)
1234.56	Float	Temperature value
°C	String	Temperature engineering unit
0..1	Bool	Temperature alarm (out-of-limits)
=	Char	Temperature trend (+,-,= or “ ”)
Dp	String	Calculated parameter type (nc: no calculation, Dp: dew point, Fp: frost point)
1234.56	Float	Calculated numerical value
°C	String	Calculated parameter engineering unit
0..1	Bool	Calculated parameter alarm (out-of-limits)
+	Char	Calculated parameter trend (+,-,= or “ ”)
1..255	Byte	Device type (HygroClip, Logger, HF, HM, ...)
V1.0	String	Firmware version
12345678	String	Device serial number
Name	String	Device name
000...255	Byte	Alarm Byte: (Bit0=out-of-limits value, Bit5= sensor quality, Bit6 = humidity simulator, Bit7= temperature simulator)

E-M-AC3000-CP_25 Document code	Rotronic AG Bassersdorf, Switzerland Unit
AirChip 3000 Communication Protocol Options Document title	Description Document Type
	Page 14 of 45

Each individual data element, including the last, is followed by a semi-colon (separator)

Examples:

{F04RDD}

{F04rdd 001; 4.45;%RH;000;=; 20.07;°C;000;=;Fp;-19.94;°C;000;+;001;B2.8;0000000002;HyClp 2 ;006;J^M

{F04RDD}

{F04rdd 001; 4.45;%RH;000;=; 20.06;°C;000;=;nc;---;°C;000; ;001;B2.8;0000000002;HyClp 2 ;006;6^M

{F04RDD}

{F04rdd 001; 4.47;%RH;000;=; 20.04;°C;000;=;nc;-19.92;°C;000;=;001;B2.8;0000000002;HyClp 2 ;006;4^M

Note: after changing the HC2 from dew or frost point to “no calculation”, the probe will still send a value after the characters “nc”. This value has no meaning and will disappear after a power reset.

E-M-AC3000-CP_25 Document code	Rotronic AG Bassersdorf, Switzerland Unit
AirChip 3000 Communication Protocol Options Document title	Description Document Type
Page 15 of 45	

3.5 REN command: change the RS-485 address

This command is used to change the RS-485 address of the device

Command format:

{	ID	Current Address or 99	REN	Serial number; New Address	Chksum or }	CR
---	----	-----------------------	-----	----------------------------	-------------	----

Answer format

{	ID	New address	ren OK	Chksum
---	----	-------------	--------	--------

Example: change RS address of probe serial number 0000000002 from 5 to 4

```
{F05REN 0000000002;4;}
```

```
{F04ren OKD^M
```

- o Note: Address 99 can be used temporarily to communicate with a single device of unknown address. This address causes the device to answer regardless of its address. The actual device address is returned as part of the answer string. Address 99 should not be used when several devices are connected to a network.

E-M-AC3000-CP_25 Document code	Rotronic AG Bassersdorf, Switzerland Unit
AirChip 3000 Communication Protocol Options Document title	Description Document Type
Page 16 of 45	

3.6 HCA command: probe adjustment

This command is used to adjust the probe against a reference (humidity and temperature)

Command format

{	ID	Adr	HCA	Parameters	Chksum	CR
---	----	-----	-----	------------	--------	----

Answer format

{	ID	Adr	hca OK	Chksum
---	----	-----	--------	--------

Command parameter structure:

0	<ul style="list-style-type: none"> Individual probe and instrument with integral probe: always use 0 as the probe input number All other devices: use the probe input number
0..2	0 = Humidity adjustment (against a ROTRONIC standard – RHS) 1 = Humidity adjustment against a reference instrument 2 = Temperature adjustment against a reference instrument
0..3	0 = Save both the current measurement and the reference value 1 = Adjust 2 = Return to factory original adjustment 3 = Delete all saved calibration points
-50...200	Reference Value

E-M-AC3000-CP_25 Document code	Rotronic AG Bassersdorf, Switzerland Unit
AirChip 3000 Communication Protocol Options Document title	Description Document Type
	Page 17 of 45

Notes:

- The HCA command can be used to do a 1-point adjustment of temperature or humidity as well as a multi-point adjustment of humidity. The HCA command cannot be used for a 2-point temperature adjustment. Document **E-T-2P TempAdj** is available from ROTRONIC for users who are interested in doing a 2-point temperature adjustment.
- Adjustment of the HC2 probe is always a two step process. The first step consists in saving at least one calibration point to the probe memory. The second step consists in carrying out the actual probe adjustment.

Example of a correct sequence of commands:

```
{F01HCA 0;0;0;20.00;} Save humidity calibration point (20 %RH)
```

```
{F01hca OK(^M
```

```
{F01HCA 0;0;1;;} Adjust humidity using all calibration points in memory – note that no reference value is required
```

```
{F01hca OK(^M
```

- When the third parameter of the HCA command is set to 1 (adjust), no reference value needs to be specified. Any reference value (last parameter) is ignored by the HC2 probe.

E-M-AC3000-CP_25 Document code	Rotronic AG Bassersdorf, Switzerland Unit			
AirChip 3000 Communication Protocol Options Document title	<table border="1"> <tr> <td data-bbox="906 205 1328 289" rowspan="2"></td> <td data-bbox="1328 205 1490 289"> Description Document Type </td> </tr> <tr> <td data-bbox="1328 289 1490 352"> Page 18 of 45 </td> </tr> </table>		Description Document Type	Page 18 of 45
	Description Document Type			
	Page 18 of 45			

- The effect of an adjustment depends on the number of calibration points present in the probe memory prior to the adjustment:
 - 1 calibration point: offset adjustment (equivalent to a 1-point adjustment)
 - 2 calibration points: offset and slope adjustment
 - 3 or more calibration points: offset, slope and linearization adjustment

- Following an adjustment, all calibration points should be deleted from the probe memory

Example:

```
{F01HCA 0;0;3;;} Erase all humidity calibration points
{F01hca OK(^M
```

E-M-AC3000-CP_25 Document code	Rotronic AG Bassersdorf, Switzerland Unit
AirChip 3000 Communication Protocol Options Document title	Description Document Type Page 19 of 45

3.7 LGC command: status and programming of the data recording function

This command has two different formats and is used either to read (query) or to program the log function

Command format 1 (used to read the status of the data recording function):

{	ID	Adr	LGC	Chksum	CR
---	----	-----	-----	--------	----

Answer format

{	ID	Adr	lgc	Recording Status	Chksum
---	----	-----	-----	------------------	--------

Structure used for the recording status data (answer to command format 1):

0..3	Boolean	0 = not recording data, 1= recording data Loop recording only: 2 = recording data and memory full (see note below) Loop recording only: 3 = not recording data and memory full (see note below)
1..2	Byte	1 = Start-Stop mode (record until memory is full) 2 = Loop recording (dump oldest data when memory is full and keep recording)
1..65535	Word	Log interval (in multiples of 5 seconds) 1 = 5s, 2 = 10s, etc.
123456789	Long	Date and time of the first data sample referenced to Jan, 01, 2000 and expressed in increments of 5 seconds – see note 2 below
0...2000	Word	Number of data records (see note below)

Note: when the memory is full (2000 data records) the first element of the answer structure is equal to either 2 or 3, depending on whether data is being recorded or not. In this situation, the number of data records given in the answer should be disregarded and replaced with the number 2000.

Command format 2 (used to program the data recording function):

{	ID	Adr	LGC	Recording Settings	Chksum	CR
---	----	-----	-----	--------------------	--------	----

Answer format:

{	ID	Adr	lgc OK	Chksum
---	----	-----	--------	--------

E-M-AC3000-CP_25 Document code	Rotronic AG Bassersdorf, Switzerland Unit
AirChip 3000 Communication Protocol Options Document title	Description Document Type Page 20 of 45

Structure used for programming the recording settings (command format 2):

0..1	Boolean	0 = Stop recording data, 1= Start recording data (see note 1 below)
1..2	Byte	1 = Start-Stop mode (record until memory is full) 2 = Loop recording (dump oldest data when memory is full and keep recording)
1..65535	Word	Log interval (in multiples of 5 seconds) 1 = 5s, 2 = 10s, etc.
123456789	Long	Current date and time referenced to Jan, 01, 2000 and expressed in increments of 5 seconds – see note 2 below

Note 1:

- The command to stop recording must be sent before a new recording can be started
- Whenever the probe starts recording data, all previously recorded data is erased from the memory

Note 2:

The current date and time must be written to the HC2 whenever recording is started because the HC2 itself does not have an internal real time clock. An internal time counter ensures that data is recorded at fixed intervals of time (the log interval) as configured by the user (multiples of 5 seconds). Accuracy of the log interval depends on the accuracy of the quartz oscillator used by the HC2 and is not comparable to the accuracy provided by a real time clock. When using the LGC command to stop data recording, the user must decide whether to send the date and time of the first data sample or the date and time of the last data sample (or the date and time when the stop command was issued).

Date and time are referenced to January 1, 2000, 00:00 and are expressed in increments of 5 seconds counting from the reference date and time: 1 = Jan, 01, 2000, 00:00:05, 2 = Jan, 01, 2000, 00:00:10, etc.

E-M-AC3000-CP_25 Document code	Rotronic AG Bassersdorf, Switzerland Unit				
AirChip 3000 Communication Protocol Options Document title	<table border="1"> <tr> <td data-bbox="906 205 1328 289"></td> <td data-bbox="1328 205 1490 289"> Description Document Type </td> </tr> <tr> <td colspan="2" data-bbox="906 289 1490 352"> Page 21 of 45 </td> </tr> </table>		Description Document Type	Page 21 of 45	
	Description Document Type				
Page 21 of 45					

Example1: Start recording data in the Start-Stop Mode with a 10s log interval

{F05LGC 1;1;2;50746164;}

{F05lgc OK6^M

Check function status (Query)

{F05LGC}

{F05lgc 001;001;00002;0050746164;00000;H^M

Example 2: Stop recording data

{F05LGC 0;1;2;50746164;}

{F05lgc OK6^M

Check function status (Query)

{F05LGC}

{F05lgc 000;001;00002;0050746164;00037;Q^M

E-M-AC3000-CP_25 Document code	Rotronic AG Bassersdorf, Switzerland Unit
AirChip 3000 Communication Protocol Options Document title	Description Document Type
Page 22 of 45	

3.8 ERD command: read recorded data

This command is used to read data from the memory (the data are read Byte after Byte)

Command format:

{	ID	Adr	ERD	Parameters	Chksum	CR
---	----	-----	-----	------------	--------	----

Command parameter structure:

0..1	0 = internal memory 1 = reserved – do not use
2176	Use address 2176 when downloading recorded data samples
0..65535	Number of Bytes to be read

Answer format

	ID	Adr	erd	Data	Chksum
--	----	-----	-----	------	--------

The recorded data is transmitted Byte by Byte, in the same order as it was recorded:

Proceed as follows:

- 1) Use the LGC command to read the recording status of the HC2. Note or capture the following:
 - Recording mode
 - Log interval (multiple of 5 seconds)
 - Recording start date and time (see note below)
 - Number of recorded data samples (in the loop recording mode, disregard the information returned by the LGC command whenever the LGC command reports that the memory is full. In this situation, use 2000 as the number of data samples).
- 2) Use the ERD command to trigger the downloading of recorded data:

Example of data request: {F00ERD 0;2176;0006} + CR

E-M-AC3000-CP_25 Document code	Rotronic AG Bassersdorf, Switzerland Unit
AirChip 3000 Communication Protocol Options Document title	Description Document Type Page 23 of 45

Address 2176 is always the address of the first byte of the first recorded data sample. The above example assumes that 2 data samples were recorded. The number of bytes to be downloaded (0006) is equal to 3 times the number of recorded data samples (each data sample uses 3 Bytes)

Example of reply: {F00erd 016;202;038;017;198;038;Y

- To convert the Bytes into relative humidity and temperature data, group the downloaded Bytes in blocks of 3 Bytes and proceed for each block as explained below:

Procedure	Example
Block of 3 Bytes: $\text{Value} = \text{Byte1} + 2^8 * \text{Byte2} + 2^{16} * \text{Byte3}$	First block of 3 Bytes: Byte1 = 016 Byte 2 = 202 Byte3 = 038 $\text{Value} = 16 + 256 * 202 + 65536 * 38 = 2542096$
Calculate the value of %RH as follows: $\%RH = (\text{Value} \bmod 1024) / 10$	$2542096 \bmod 1024 = 528$ $528 / 10 = 52.8 \%RH$
Calculate the value of temperature as follows: $\text{Temperature} = \text{floor}(\text{Value} / 1024) / 20 - 100$	$\text{floor}(2542096 / 1024, 1) = 2482$ $2482/20 - 100 = 24.1$

As mentioned before, the HC2 does not have an internal real time clock and the data samples are not date and time stamped. Depending on the recording mode, the date and time of each recorded sample can be reconstituted as follows:

- Start / Stop Recording Mode**

If the LGC command was not used to stop recording data, the date and time returned by the LGC command is the date and time of the first data sample. Use the log interval to find the date and time of the subsequent data samples.

E-M-AC3000-CP_25 Document code	Rotronic AG Bassersdorf, Switzerland Unit				
AirChip 3000 Communication Protocol Options Document title	<table border="1"> <tr> <td data-bbox="906 205 1328 289"></td> <td data-bbox="1328 205 1489 289"> Description Document Type </td> </tr> <tr> <td colspan="2" data-bbox="906 289 1489 348"> Page 24 of 45 </td> </tr> </table>		Description Document Type	Page 24 of 45	
	Description Document Type				
Page 24 of 45					

If the LGC command was used to stop recording data, the date and time returned by the LGC command is the date and time of either the first or the last data sample, depending on which date and time was sent as part of the LGC command. Depending on the situation, use the log interval to find the date and time of either the subsequent or previous data samples.

- **Loop Recording Mode**

When less than 2,000 data samples have been recorded, proceed as for the Start / Stop Mode

When 2,000 data samples have been recorded the memory is full and it is very likely that the oldest data samples have been erased to make room for additional data samples. In this situation, the first element of the answer returned by the LGC command is equal to either 2 or 3. This indicates that 2,000 data samples have been recorded. Make a note of the date and time when the ERD command was issued. Proceed as follows to determine the time and date of the most recent data sample:

. Use both the recording start time and the value of the log interval to determine when data samples were being recorded. Example: if the recording started exactly at the top of an hour with a log interval of 10 minutes, samples have been recorded at HH:00:00, HH:10:00, HH:20:00, etc. If the ERD command was sent at 14:15:00, then the time of the latest data sample is 14:10:00.

. Knowing the date and time of the latest data sample, as well as the value of log interval, the date and time of the preceding data samples can be found.

E-M-AC3000-CP_25 Document code	Rotronic AG Bassersdorf, Switzerland Unit
AirChip 3000 Communication Protocol Options Document title	Description Document Type Page 25 of 45

3.9 TID command: set date and time for HL20

With this command the time of the RTC (real time clock). The time format is in seconds after the 1st of January 2000.

Command format (set time):

„{“	ID	Addr	„TID“	Zeit	Chksum
-----	----	------	-------	------	--------

e.g.: {F01TID 040688086 ; }

Answer format:

„{“	ID	Addr	„tid OK“	Chksum
-----	----	------	----------	--------

E-M-AC3000-CP_25 Document code	Rotronic AG Bassersdorf, Switzerland Unit
AirChip 3000 Communication Protocol Options Document title	Description Document Type
Page 26 of 45	

3.10 HRD command: read out data memory of HL20

This command is used to read out the EEPROM of the HL20 data logger. Data is provided in HEX format.

Command format:

„{“	ID	Adr	„HRD“	Parameter	Chksum
-----	----	-----	-------	-----------	--------

Parameter:

0000...FFFF EEPROM address

0000...FFFF Amount of bytes red

Parameter are transmitted without separator.

E.g.: {B01HRD 00400100}

Answer format:

„{“	ID	Adr	„hrd“	Antwortdaten	Chksum
-----	----	-----	-------	--------------	--------

Parameter are transmitted without separator.

E.G.: {F01hrd 01AB7CFF338A}

E-M-AC3000-CP_25 Document code	Rotronic AG Bassersdorf, Switzerland Unit
AirChip 3000 Communication Protocol Options Document title	Description Document Type Page 27 of 45

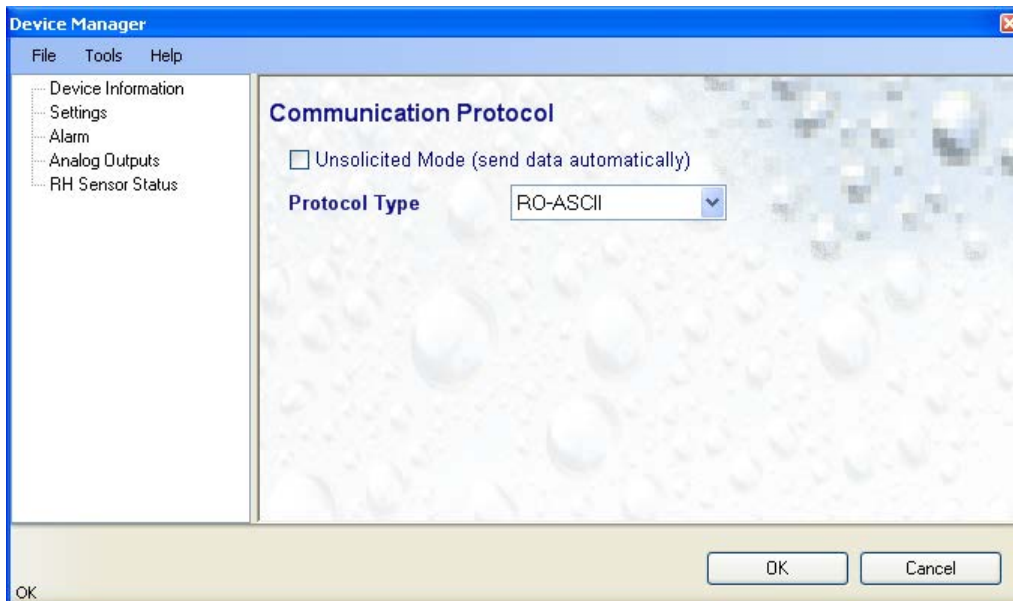
3.11 Configuration with the HW4 software

RO-ASCII is the default communication protocol used by AirChip 3000 devices. The structure of this protocol cannot be modified by the user. As an option, the AirChip 3000 device can be set to use a monologue communication mode by placing a check mark in the box labeled “unsolicited mode”. In this mode the AirChip 3000 device sends the measurement data automatically with each data refresh cycle, as opposed to waiting for a data request. To get the data, the receiving device must be listening at all times.

The HW4 software (Device Manager) is required to set the AirChip 3000 device to send data automatically, without requiring a data request. For a list of the HW4 manuals corresponding to the different AirChip 3000 devices, please consult the following document:

E-M-HW4v3-DIR This document can be downloaded from several of the ROTRONIC websites.

HW4 configuration screen for RO-ASCII (HW4 Device Manager):



E-M-AC3000-CP_25 Document code	Rotronic AG Bassersdorf, Switzerland Unit				
AirChip 3000 Communication Protocol Options Document title	<table border="1"> <tr> <td data-bbox="906 205 1328 289"></td> <td data-bbox="1328 205 1490 289"> Description Document Type </td> </tr> <tr> <td colspan="2" data-bbox="906 289 1490 352"> Page 28 of 45 </td> </tr> </table>		Description Document Type	Page 28 of 45	
	Description Document Type				
Page 28 of 45					

4 MODBUS PROTOCOL

The AirChip 3000 Modbus protocol is limited to reading measurement data from the AirChip 3000, HC2-S and AC3005 devices. Functions such as device configuration, humidity and temperature adjustment, etc. are not supported by the AirChip 3000 Modbus protocol.

4.1 Physical interface

The Modbus protocol can be used only with an AirChip 3000 device that features a RS-485 interface. As with any RS-485 network, the Modbus network should be installed as per the instructions provided in the following document: **E-DV04-RS485.01**

Note:

The Modbus protocol and the RO-ASCII protocol used by the HW4 software cannot be used simultaneously on the same RS-485 network. For RS-485 networks the addressing of the device must be individual for each device in the network (can be set in the device manager).

E-M-AC3000-CP_25 Document code	Rotronic AG Bassersdorf, Switzerland Unit
AirChip 3000 Communication Protocol Options Document title	Description Document Type
Page 29 of 45	

4.2 Data request structure

Start	Address	Function	Data		Checksum	End	
1 Character	2 Characters	2 Characters	n Characters		2 Characters	2 Characters	
:	ADR	FC	Adr	Anz	LRC	CR	LF

:	Modbus start character
ADR	Device RS-485 address (2 characters) – can be changed with the HW4 software
FC	Function code (2 characters)
Adr	Register Address (optional in a data request, will be ignored)
Anz	Number of registers to be read (optional in a data request, will be ignored)
LRC	Checksum (optional in a data request, 2 characters, will be ignored)
CR	1 st Modbus end character (Carriage Return)
LF	2 nd Modbus end character (Line Feed)

Example: :0103CRLF

Function code: one of four values used to either read or write information:

03 = Read a value from one or more holding registers

04 = Read a value from one or more input registers

06 = Write a value into one holding register

10 = Write a value into two or more holding registers

The AirChip 3000 supports only function code 03

E-M-AC3000-CP_25 Document code	Rotronic AG Bassersdorf, Switzerland Unit
AirChip 3000 Communication Protocol Options Document title	Description Document Type
Page 30 of 45	

4.3 Response structure and data encoding

Start	Address	Function	Data		Checksum	End	
1 Character	2 Characters	2 Characters	n Characters		2 Characters	2 Characters	
:	ADR	FC	Nbr	Hex	LRC	CR	LF

:	Modbus start character
ADR	Device RS-485 address (2 characters) – can be changed with the HW4 software
FC	Function code (2 characters)
Nbr	Number of data bytes
Hex	Data in Hex format
LRC	Checksum (will be ignored)
CR	1 st Modbus end character (Carriage Return)
LF	2 nd Modbus end character (Line Feed)

Example: :010306**015E04CE042B**96CRLF (note: the CR and LF characters are not visible)

In the above example, the measurement data is returned in the Hex format as a group of 6 bytes: 015E04CE042B and is interpreted as follows:

Data 1	: Humidity	= 015E	= 350
Data 2	: Temperature	= 04CE	= 1230
Data 3	: Dew or frost point	= 042B	= 1067

E-M-AC3000-CP_25 Document code	Rotronic AG Bassersdorf, Switzerland Unit
AirChip 3000 Communication Protocol Options Document title	Description Document Type Page 31 of 45

Please note that the HW4 software is used to determine which parameters are transmitted in the response (Data1 to 3) and in which sequence. The unit system used for both temperature and the calculated parameter (dew or frost point) is also set with HW4 as part of the device configuration.

In the decimal format, the data are numerically scaled as follows:

Humidity : 0...100% = 0...1000

Temperature und calculated parameter : -100...600°C = 0...7000

In the above example of a response, the result is as follows:

Humidity = 35.0%
Temperature = 23.0°C
Dew or frost point = 6.7°C

E-M-AC3000-CP_25 Document code	Rotronic AG Bassersdorf, Switzerland Unit
AirChip 3000 Communication Protocol Options Document title	Description Document Type Page 32 of 45

4.4 Configuration with the HW4 software

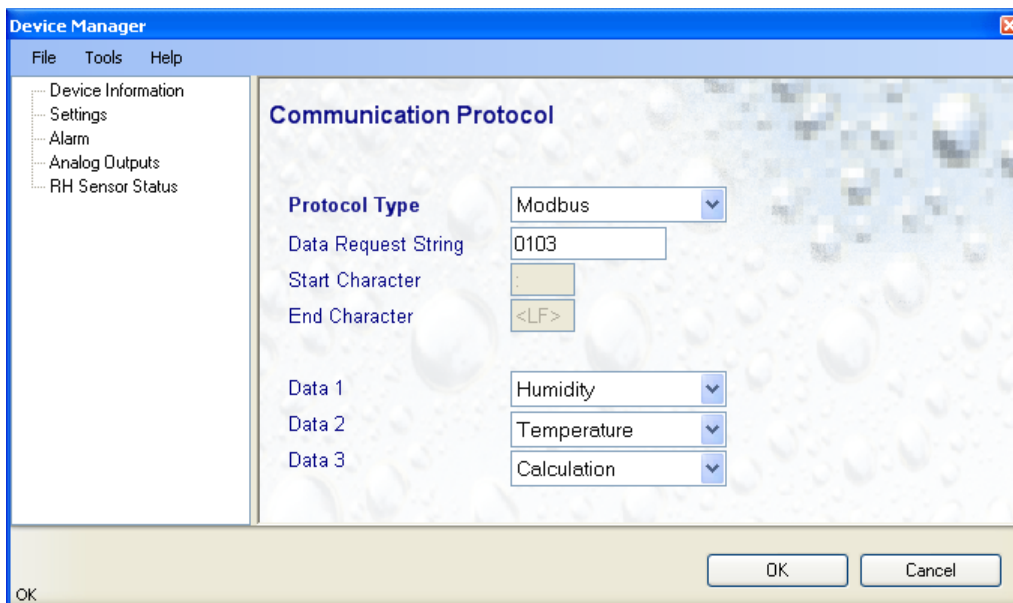
The HW4 software (Device Manager) is required to set the AirChip 3000 device to use the Modbus protocol. For a list of the HW4 manuals corresponding to the different AirChip 3000 devices, please consult the following document:

E-M-HW4v3-DIR This document can be downloaded from several of the ROTRONIC websites.

The AirChip 3000 device supports only a single Modbus command which can be configured with the HW4 software. This command allows reading measurement data from the AirChip 3000 device. No other type of information can be read.

Both the start and the stop characters cannot be changed. The transmission of Data1 to Data 3 can be either disabled or enabled. The device response will contain only the selected data in the selected sequence.

Example of a HW4 configuration screen (HW4 Device Manager):



E-M-AC3000-CP_25 Document code	Rotronic AG Bassersdorf, Switzerland Unit
AirChip 3000 Communication Protocol Options Document title	Description Document Type Page 33 of 45

5 I2C PROTOCOL

The I2C protocol option is available only with the HygroClip 2 probes and some AirChip 3000 based OEM products. While the structure of the data string generated by the AirChip 3000 fully complies with the I2C requirements, the AirChip 3000 has the following limitations:

- The AirChip 3000 always acts as a I2C Master writing to the bus. After the START condition (S), a slave address is sent. In accordance with the I2C protocol, this address is 7 bits long followed by an eighth bit which is the data direction bit (R/W). With the AirChip 3000 this bit is always a 'zero' indicating a transmission (WRITE). The AirChip 3000 device sends a data string automatically with each data refresh cycle (unsolicited data), as opposed to waiting for a data request. To get the data, the receiving device must be listening at all times
- In spite of the fact that the I2C data string includes an address, the AirChip 3000 is not addressable and communication is limited to a single AirChip 3000 device (no networking of several devices, AirChip 3000 or other).
- The I2C protocol can only be used to read measurement data from the AirChip 3000 device. Functions such as device configuration, humidity and temperature adjustment, etc. are not supported.

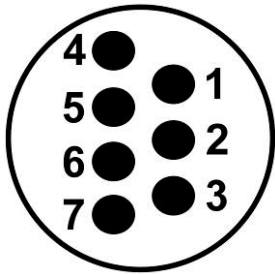
E-M-AC3000-CP_25 Document code	Rotronic AG Bassersdorf, Switzerland Unit
AirChip 3000 Communication Protocol Options Document title	Description Document Type Page 34 of 45

5.1 Physical interface

The HygroClip 2 probe can be connected directly to the I2C input of another device. When configured to use the I2C communication protocol, the function of the 7 pins of the HygroClip 2 probe connector is changed as follows:

HygroClip 2 probe: Probe connector (7-pin male – looking at probe)

RO-ASCII mode



Pin #	Name	Function
1	VDD (+)	3.3...5 VDC
2	GND	Power ground and digital signal ground
3	RXD	UART
4	TXD	UART
5	Out 1 analog (+)	Humidity 0...100%RH (default)
6	Out 2 analog (+)	Temperature -40...60°C (default)
7	AGND	Analog signal ground

I2C mode

Pin #	Name	Function
1	VDD (+)	3.3...5 VDC
2	GND	Power ground and digital signal ground
3	SDA	I2C
4	CLK	I2C
5	Out 1 analog (+)	Humidity 0...100%RH (default)
6	Out 2 analog (+)	Temperature -40...60°C (default)
7	AGND	Analog signal ground

E-M-AC3000-CP_25 Document code	Rotronic AG Bassersdorf, Switzerland Unit
AirChip 3000 Communication Protocol Options Document title	Description Document Type Page 35 of 45

Other AirChip 3000 devices:

Some AirChip 3000 based OEM products can be set to use the I2C protocol option. Please consult the hardware manual of the device.

5.2 Data string structure and data encoding

STR	ADDR	HMSB	HLSB	TMSB	TLSB	CMSB	CLSB	STP
-----	------	------	------	------	------	------	------	-----

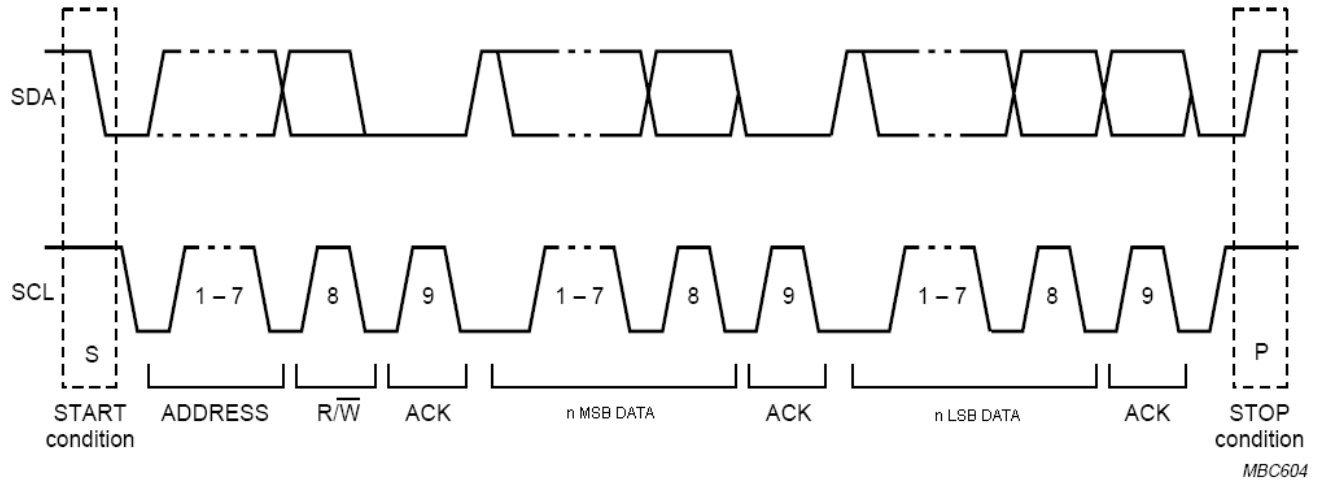
STR	I2C Start Condition
ADDR	Slave Address (MSB: 7-bit address + LSB: "zero" bit)
HMSB	Relative humidity MSB
HLSB	Relative humidity LSB
TMSB	Temperature MSB
TLSB	Temperature LSB
CMSB	Calculated parameter MSB
CLSB	Calculated parameter LSB
STP	I2C Stop Condition

Every data byte is 8-bits long and is followed by an acknowledge bit (ACK). Data is transferred with the most significant bit (MSB) first. The measurement data are transmitted in the Hex format and are numerically scaled as follows in the decimal format:

Humidity : 0...100% = 0...1000
Temperature und calculated parameter : -100...600°C = 0...7000

Data Transfer example:

E-M-AC3000-CP_25	Rotronic AG Bassersdorf, Switzerland
Document code	Unit
AirChip 3000 Communication Protocol Options	Description Document Type
Document title	Page 36 of 45



E-M-AC3000-CP_25 Document code	Rotronic AG Bassersdorf, Switzerland Unit
AirChip 3000 Communication Protocol Options Document title	Description Document Type
	Page 37 of 45

5.3 Configuration with the HW4 software

The HW4 software (Device Manager) is used to enable the I2C protocol option and to configure the following:

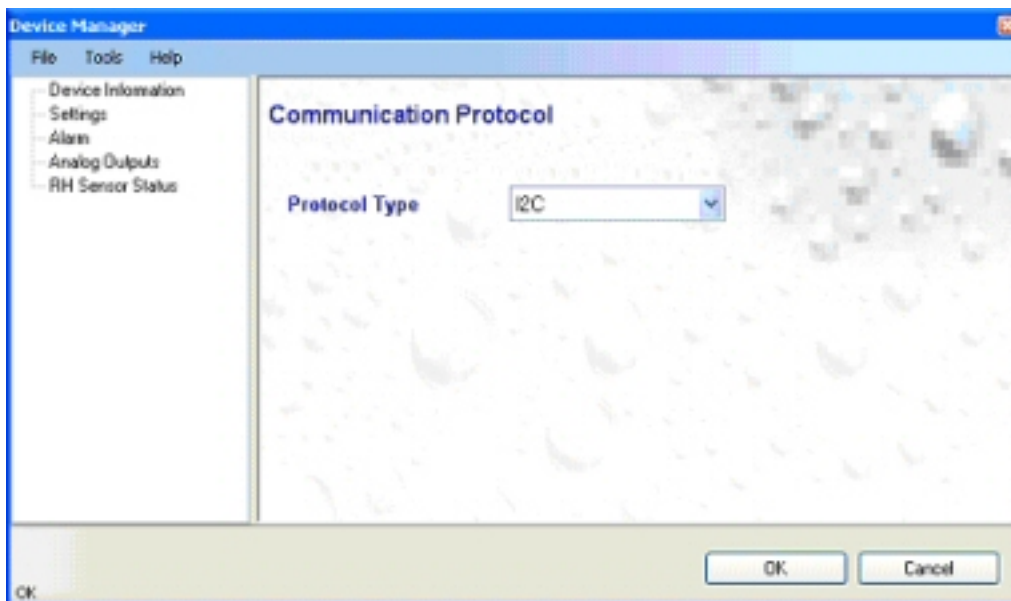
- Calculated parameter (dew point or dew / frost point)
- Temperature unit (°C/°F) – also used for the dew or frost point
- RS-485 address – used as the slave address to conform with the I2C protocol

Please note that the user cannot select which parameters are transmitted by the data string and cannot modify the sequence of the parameters.

For a list of the HW4 manuals corresponding to the different AirChip 3000 devices, please consult the following document:

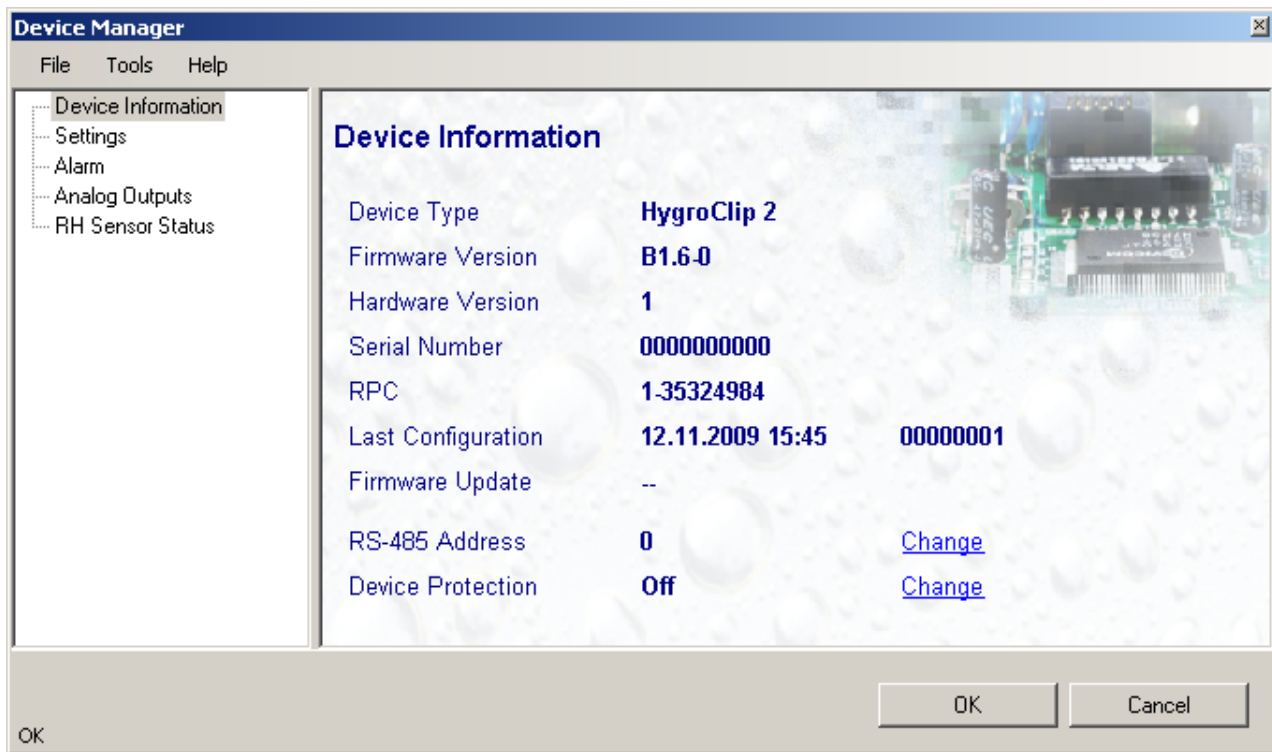
E-M-HW4v3-DIR This document can be downloaded from several of the ROTRONIC websites.

Example of a HW4 configuration screen (HW4 Device Manager):

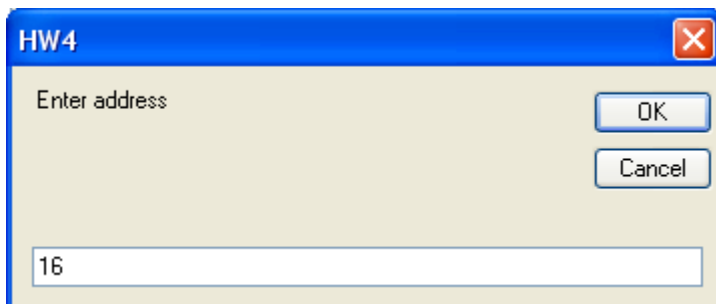


E-M-AC3000-CP_25 Document code	Rotronic AG Bassersdorf, Switzerland Unit
AirChip 3000 Communication Protocol Options Document title	Description Document Type Page 38 of 45

The RS-485 address of the AirChip 3000 device can be changed with HW4 > Device Manager > Device Information and is used within the I2C data string as the slave address:



Click on the blue link next to the RS-485 address to open the following form and change the address:



E-M-AC3000-CP_25 Document code	Rotronic AG Bassersdorf, Switzerland Unit
AirChip 3000 Communication Protocol Options Document title	Description Document Type Page 39 of 45

6 CUSTOM PROTOCOL

The Custom communication protocol can be used to provide compatibility of the AirChip 3000 device with an existing communication system. The Custom communication protocol is limited to reading measurement data from the AirChip 3000 device. Functions such as device configuration, humidity and temperature adjustment, etc. are not supported.

The Custom protocol is applicable to all AirChip 3000 devices with a digital interface and allows RS-485 networking

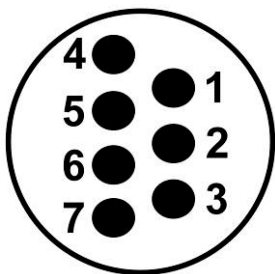
6.1 Physical interface

HygroClip 2 probe:

Use a cable that converts the probe UART interface into an existing PC interface or Ethernet port (for example cable AC3001 allows connection to a USB port). The function of the 7 pins of the HygroClip 2 probe connector is the same as in the RO-ASCII mode.

Pin-out diagram: Probe connector (7-pin male – looking at probe)

RO-ASCII mode



Pin #	Name	Function
1	VDD (+)	3.3...5 VDC
2	GND	Power ground and digital signal ground
3	RXD	UART
4	TXD	UART
5	Out 1 analog (+)	Humidity 0...100%RH (default)
6	Out 2 analog (+)	Temperature -40...60°C (default)
7	AGND	Analog signal ground

Other AirChip 3000 devices:

Depending on the model, instruments based on the AirChip 3000 feature a USB interface, a RS-485 interface or an Ethernet interface.

E-M-AC3000-CP_25 Document code	Rotronic AG Bassersdorf, Switzerland Unit
AirChip 3000 Communication Protocol Options Document title	Description Document Type
Page 40 of 45	

6.2 Data request structure

STR	REQ	STP
-----	-----	-----

STR Start character. Use the character | (vertical bar) when the string is to be passed to a slave device within a RS-485 multi-drop

REQ Data request string (maximum 4 characters). In the case of a network, use a different data request string for each individual device as a means of specifically addressing data requests to each device.

STP Stop character

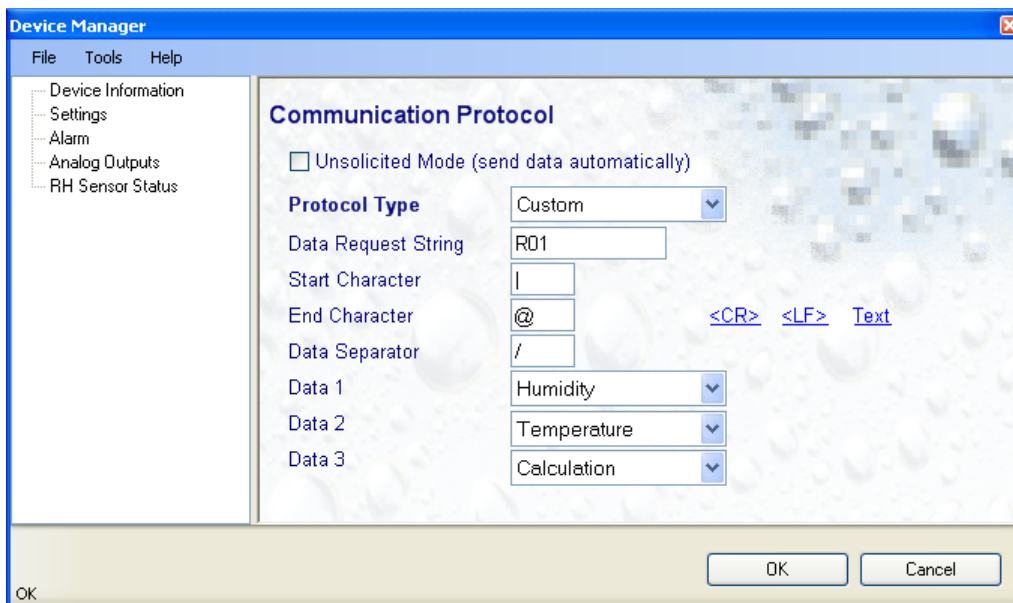
E-M-AC3000-CP_25 Document code	Rotronic AG Bassersdorf, Switzerland Unit
AirChip 3000 Communication Protocol Options Document title	Description Document Type Page 41 of 45

6.3 Configuration with the HW4 software

The HW4 software (Device Manager) is required to define a custom communication protocol and to set the AirChip 3000 device to use this protocol. As an option, the AirChip 3000 device can be set to use a monologue communication mode by placing a check mark in the box labeled “unsolicited mode”. In this mode the AirChip 3000 device sends the measurement data automatically with each data refresh cycle, as opposed to waiting for a data request. To get the data, the receiving device must be listening at all times.

For a list of the HW4 manuals corresponding to the different AirChip 3000 devices, please consult the following document: **E-M-HW4v3-DIR**. This document can be downloaded from several of the ROTRONIC websites.

All parameters can be freely configured (data request string: limited to a maximum of 4 characters). Up to 3 measurement values can be included in the response (humidity, temperature and calculated parameter). These values can be set in any sequence within the response.



E-M-AC3000-CP_25	Rotronic AG Bassersdorf, Switzerland
Document code	Unit
AirChip 3000 Communication Protocol Options	Description
Document title	Document Type
	Page 42 of 45

Data Request String : Maximum 4 ASCII characters. In the case of a network, use a different string for each individual device as a means of addressing each data request.

Start Character : Use any ASCII character. Please note that the Start character cannot be repeated anywhere else within the data request string.

An AirChip 3000 device may be directly connected by RS-485 to a device such as an Ethernet Server. In that case the AirChip 3000 device is a master device. Do not use the vertical bar | as the start character when sending a data request to the AirChip 3000 device.

When the data request is to be passed to a slave device within a RS-485 multi-drop, be sure to use the character | (vertical bar) as the Start character.

End Character : This can be CR (Carriage Return), LF (Line Feed) or an ASCII character. Use the blue links to select one of these options

Data Separator : This ASCII character will be used in the answer after each block of data: Data 1, Data 2 and Data 3

Data 1, 2 and 3 : Use these fields to select which parameters will be returned in the answer and in which sequence

E-M-AC3000-CP_25 Document code	Rotronic AG Bassersdorf, Switzerland Unit
AirChip 3000 Communication Protocol Options Document title	Description Document Type
Page 43 of 45	

6.4 Response structure

Data 1	DS	Data 2	DS	Data 3	DS
--------	----	--------	----	--------	----

Data 1, 2 and 3 : Corresponds to the parameter selected for each data block (if enabled)

DS : Data separator

Notes:

- Regardless of the numerical value of the data, each data element always consists of 6 characters. Positive values are formatted as xxx.xx and negative values as -xx.xx. The numerical limits are 999.99 for positive values and -99.99 for negative values.
- When the numerical value is less than maximum allowed by the formatting, the space character (shown here as _) is used as a place holder. Examples: 125.34, _15.34 (15.34 is preceded by one space character), -25.67, __-.05 (-0.05 is preceded by two space characters). Data blocks that are not enabled are represented by 3 space characters followed by a period and 2 space characters. Example: ____.
- Based on the above, the answer string always consists of 21 characters (3 data blocks with 6 characters each, separator after each data block) + one end character as selected by the user.
- The data format does not include any engineering unit. The unit system used for both temperature and the calculated parameter (dew or frost point) is set with HW4 as part of the device configuration.

E-M-AC3000-CP_25 Document code	Rotronic AG Bassersdorf, Switzerland Unit
AirChip 3000 Communication Protocol Options Document title	Description Document Type Page 44 of 45

7 DEVICE IDENTIFIERS

Device	ID	Device type
HP21	F	021
HP22	P	022
HP23	P	023
HF32	F	032
HF33	F	033
HF34	F	034
HF42	F	042
HF43	F	043
HF45	F	045
HF52	H	052
HF53	H	053
HF55	H	055
HF72	F	072
HF73	F	073
HF83	H	083
HL20	F	120
HygroLog HL-NT	K	050
HC2 probes	F	001
HC2-S-HEATED	F	014
HC2-IC	F	002
HC2-WIN-USB	F	005

E-M-AC3000-CP_25 Document code	Rotronic AG Bassersdorf, Switzerland Unit
AirChip 3000 Communication Protocol Options Document title	Description Document Type Page 45 of 45

8 DOCUMENT RELEASES

Doc. Release	Date	Notes
_10	Aug. 18, 2008	Original release
_11	Oct. 31, 2008	Added to following communication protocol options, available with devices with firmware version 1.3 or higher: - Modbus - I2C - Custom
_12	Nov. 21, 2008	Added a reference to document E-T-2P TempAdj for users interested in doing a 2-point temperature adjustment
_13	Feb. 4, 2009	Reference to HW4 manuals: changed file name of document E-M-HW4v2.1-DIR to E-M-HW4v2-DIR
_14	Mar. 25, 2009	RO-ASCII protocol: corrected an error in the calculation of the checksum character for command and answer strings
_15	Jul. 08, 2009	Changed the description of the LGC and ERD RO-ASCII commands
_16	Sep. 17, 2009	Corrected the value of the dew point in the example provided under 4.3
_17	Sep. 29, 2009	Expanded the Device Identifiers list
_18	Nov. 6, 2009	Additional information regarding the answer string of the custom protocol
_19	Jan. 20, 2010	I2C protocol option: corrected the structure of the data string
_20	Jun. 18, 2010	Updated document for HW4 software v.3
_21	Nov. 21, 2013	Updated device identifiers TST command removed
_22	Dez. 03, 2014	Response time specification
_23	Dez. 04, 2014	HygroMet4 added to the list of affected products
_24	Sept. 03, 2015	<ul style="list-style-type: none"> • HC2-AW probes included • TID / HRD command included for HL-20
_25	February 2016	Update of power supply specification for devices with firmware v3.x