

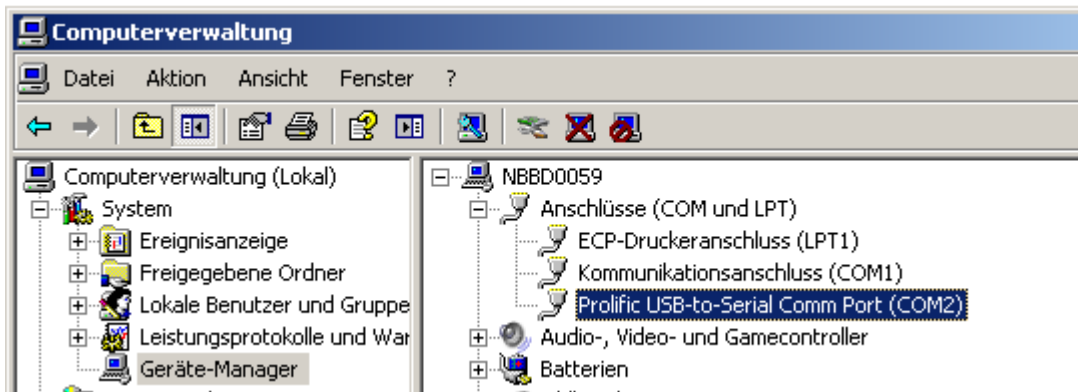
Setup and adjustment CO₂ transmitter

Required material:

- CO₂ Transmitter (CF5/8-Series)
- CF5/8 Comm Cable
- ROLINE USB to Serial Converter (Article No. 12.02.1089)
- Software UIP5 from SenseAir, [link](#)
- CO₂ CALIBRATOR (for CO₂ calibration only)

Installation of USB to Serial Converter Cable:

- Insert installation disk and follow the instructions on the screen.
- IMPORTANT: The cable must be configured from COM-Port 1 to 8 (Device Manager)



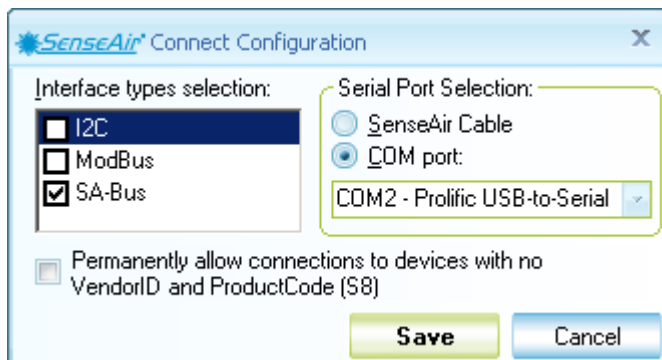
Hardware Setup:

- CO₂ Transmitter must be powered
- Connect CF5/8 Comm Cable with your computer (USB) and with the CO₂ Transmitter



Software (UIP5) setup

- Start UIP5 , go to menu Help – Check for updates...
- Software Manuals: go to Menu Help – Contents
- Go to menu Meter – Connection configuration
- Tick SA-Bus and select the right COM-Port and Save settings



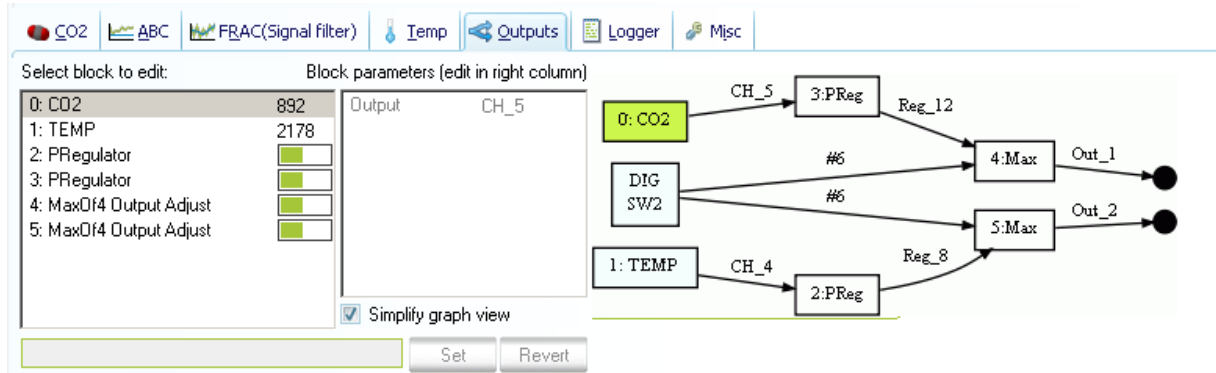
- Go to menu Meter – Connect to any
- Check connection status on the bottom right (OK)



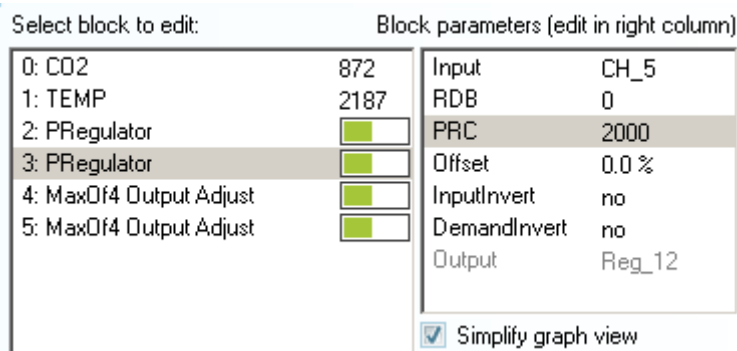
Device setup

Outputs

The most important settings are Outputs (see outputs tab)

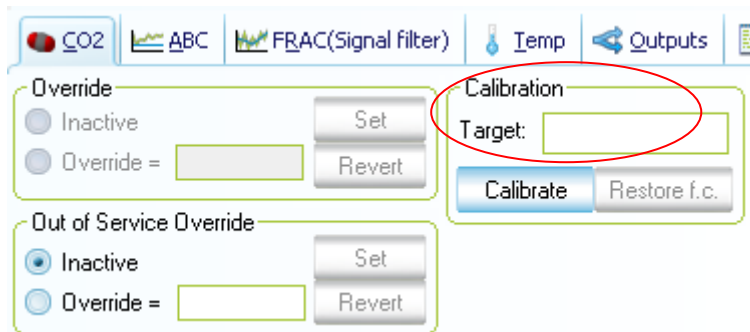


Select block No. 3 (PRegulator) to adjust the CO2 scaling. (here 0...2000 ppm)



CO₂ (calibration)

Select the CO₂ tab to calibrate the sensor



Connect the CO₂ calibrator tube with the sensor (see screenshot) and turn on the device (green light). Wait until to CO₂ value is more or less stable.



Enter 25(ppm) as Target and push "Calibrate" in the Software. Device is now calibrated.