

COLD CHAIN TEMPERATURE LOGGER



QUICK AND EASY TO USE.

- Freely configurable by user – without software installation
- Clear alarm identification
- Automatic PDF report generation
- Everything in one logger: configuration file, PDF report, instruction manual and calibration certificate
- High storage capacity: 8,000 data point memory
- Manipulation-proof



TECHNICAL INFORMATION.

Applications

Monitoring of the cold chain during transport of sensitive freight such as pharmaceuticals, foods and technical products. The logger is designed for single use only.



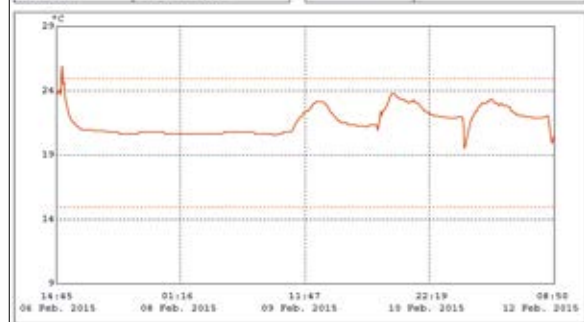
Quick Guide

- Programming: plug into a USB port
- IP65: place into the sleeve and seal closed
- Start logging: press START key for 2 seconds
- Bookmarking: press MARK key
- Downloading of the PDF file: remove the logger from the sleeve, plug into a USB port

PDF Report



Device Specification		Statistics(excludes Start Delay)	
Production date	20 Jan. 2015	Duration Time	5Days 18Hrs. 5Min.
Production lot	1403001	Max Temp	26.0°C
Firmware version	V1.0	Average Temp	21.6°C
Original time zone	UTC+1	Min Temp	19.5°C
Start	14:45:04 Feb. 2015	Std. Dev	1.0°C
Finish	08:50:12 Feb. 2015	MKT	21.7°C
Sampling Rate	5 Minutes	Total time within	5Days 18Hrs. 0Min.
Start Delay	0 Minutes	Total time above	0Days 0Hrs. 5Min.
Readings	1457 points	File Information	
High Alarm	25.0°C	File created	08:53:12 Feb. 2015
Low Alarm	15.0°C		
Alarm Delay	0 Minutes		
Alarm Type	Single event		



Index	Date	Time	°C	Index	Date	Time	°C
1	06/02/15	14:50:38	24.0	61	06/02/15	19:50:38	22.4
2	06/02/15	14:55:28	24.0	62	06/02/15	19:55:38	22.4
3	06/02/15	15:00:28	23.9	63	06/02/15	20:00:38	23.4
4	06/02/15	15:05:28	23.8	64	06/02/15	20:05:38	23.4
5	06/02/15	15:10:28	23.8	65	06/02/15	20:10:38	23.3
6	06/02/15	15:15:28	23.8	66	06/02/15	20:15:38	23.3
7	06/02/15	15:20:28	23.8	67	06/02/15	20:20:38	23.3
8	06/02/15	15:25:28	23.8	68	06/02/15	20:25:38	23.3

TL-CC1

Type of logger	Single use
Parameter	Temperature
Temperature sensor	NTC thermistor
Accuracy	±0.5 °C (-30...70 °C)
Resolution	0.1 °C
Range of application (temperature)	-30...70 °C / -22...158 °F
Range of application (humidity)	< 80 %RH
Protection	IP65 (when placed in plastic bag)
Weight	Approx. 10 g
Battery	CR2032 (not replaceable)
Dimensions without bag	80(L) x 43(W) x 2.5(D) mm
Dimensions with bag	105(L) x 55(W) x 2.5(D) mm
Logging interval	0.5/5/10/30/60/90/120 min
Start delay	0.5/5/10/30/60/90/120 min
Alarm ranges	-20...-10 °C, -10...0 °C, 2...8 °C, 0...15 °C, 0...25 °C, 15...25 °, freely selectable values
Alarm type	Deactivated, single or cumulative
Storage period	12 months
Storage capacity	8192 data points
MARK function	Marking of up to 8 points during transport
Operation	START/STOP button, MARK button
LED indicators	LED « Low » flashes red when value below alarm point LED « Hi » flashes red when value above alarm point LED « OK » flashes green during data logging LED « Battery » flashes red when low battery
Communication	USB 2.0 port, type A
Operating system	Windows
Conformity	EN12830

Log-Interval	Storage capacity reached after
30 sec	2 days 20 hours
5 min	28 days 10 hours
30 min	170 days
45 min	250 days
60 min	340 days
90 min	510 days
120 min	680 days

Delivery

In **box of 10** with instruction manual: **TL-CC1-10**

Would you like more information?

You can find a complete, up-to-date overview on the internet at www.rotronic.com.