

Release notes

HW4 Software Version 3.5.0

Change control

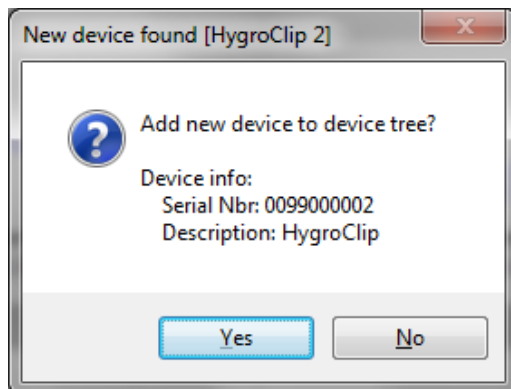
HW4 version 3.5.0 includes all the functions and features of HW4 version 3.4.2 with the following modifications and additions:

Enhancements:

- New language file included: Japanese.

New features

- Calibration of HL-1 / TL-1 / PF4 devices.
- Automatic water activity report as PDF file.
- HW4 detects automatically new USB devices.



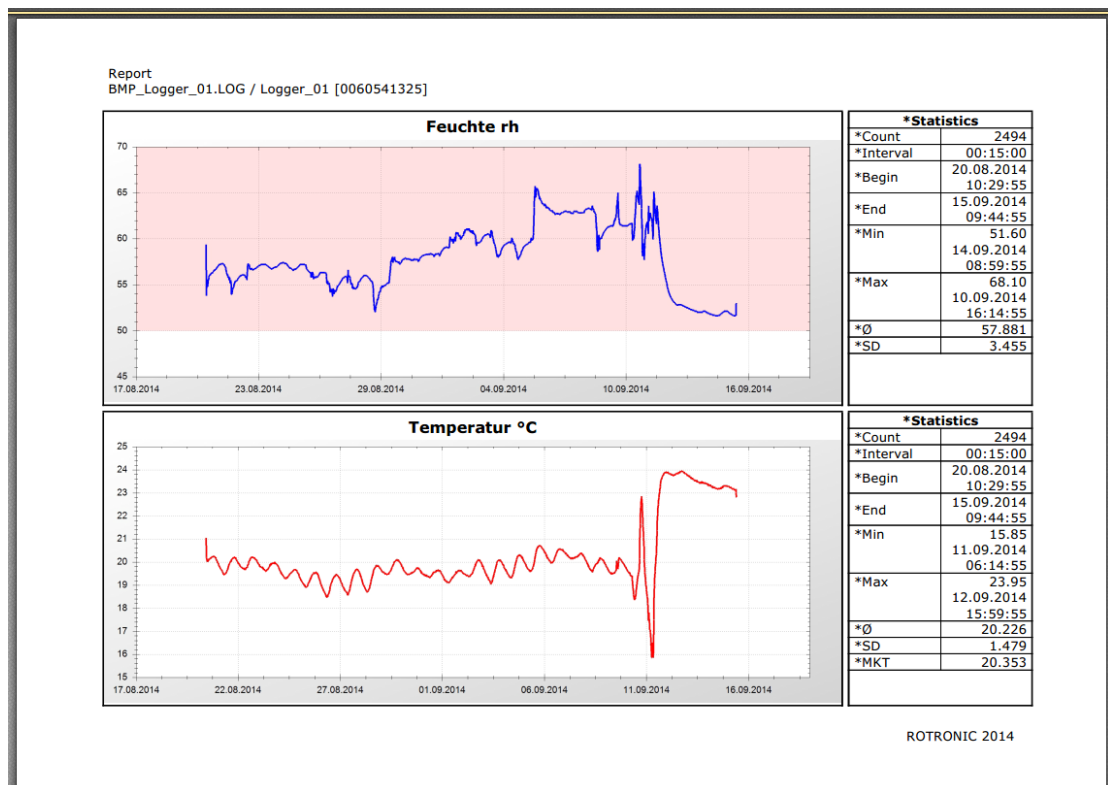
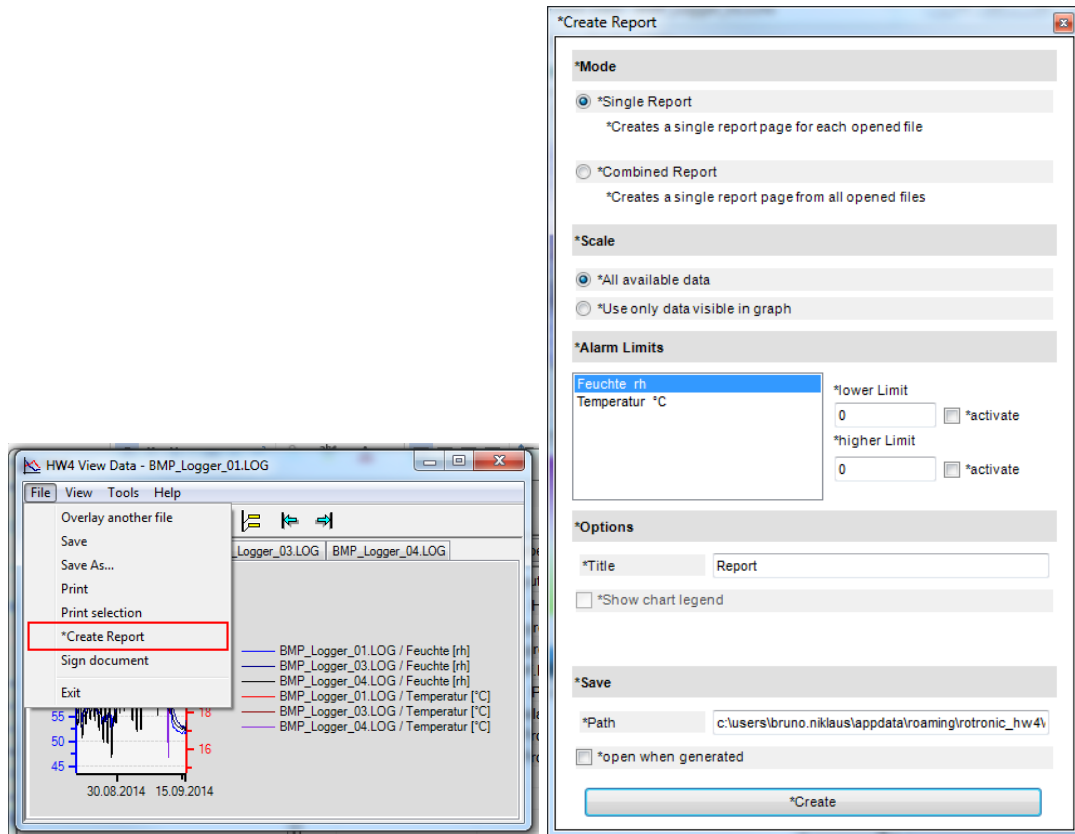
- HW4 works with USB 3.0 interfaces.

- Enabling / disabling of automatic HW4 closing after entering wrong password.

The screenshot displays the 'HW4 Global Settings Form' with a tabbed interface. The 'General' tab is selected. The form is organized into three main sections: 'Communication', 'Bluetooth', and 'Automatic Functions'. In the 'Automatic Functions' section, the option '*Close HW4 after third wrong password attempt' is checked and highlighted with a green circle. Other options in this section include 'Enable system monitoring', 'Force password change after 30 Days', 'Enter password again after 30 minutes', 'Require Password to exit HW4', 'HW4 updates notification', 'Automatic synchronization with PC clock', '*Automatic Device Detection (USB)', and 'Auto-start mode'. The 'Communication' section includes 'Enable Device Polling', 'Polling interval' (00:00:05), 'Online buffer time interval' (00:00:15), and 'Online buffer size' (1000). The 'Bluetooth' section has a 'Bluetooth serial ports' field.

Section	Option	Status
Communication	Enable Device Polling	Checked
	Polling interval	00:00:05
	Online buffer time interval	00:00:15
	Online buffer size	1000
Bluetooth	Bluetooth serial ports	
Automatic Functions	Enable system monitoring	Checked
	Force password change after 30 Days	Unchecked
	Enter password again after 30 minutes	Unchecked
	Require Password to exit HW4	Unchecked
	*Close HW4 after third wrong password attempt	Checked
	HW4 updates notification	Checked
	Automatic synchronization with PC clock	Unchecked
	*Automatic Device Detection (USB)	Checked
	Auto-start mode	Unchecked

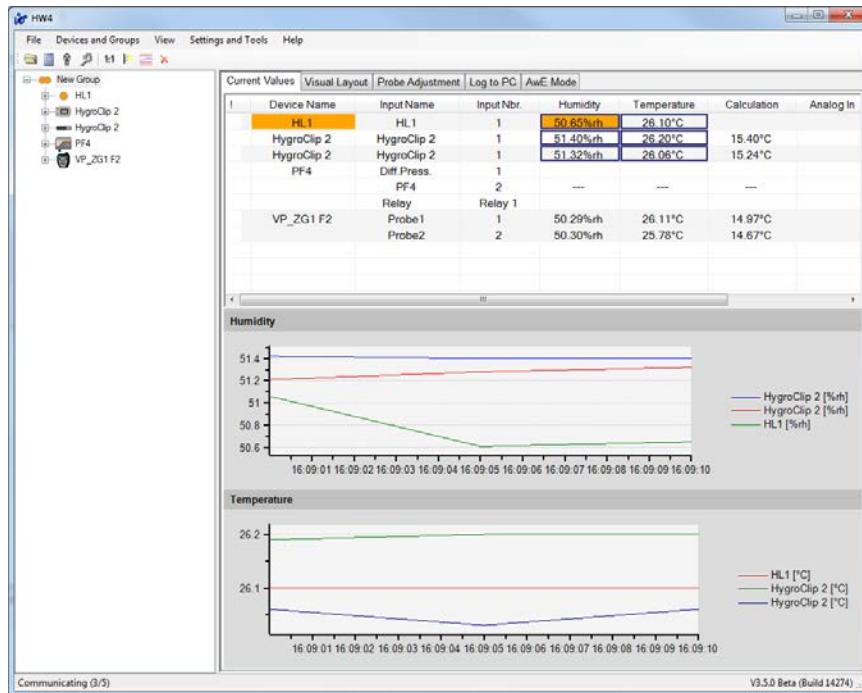
- PDF-report of log-files (single / multiple files, alarm zones, statistics)



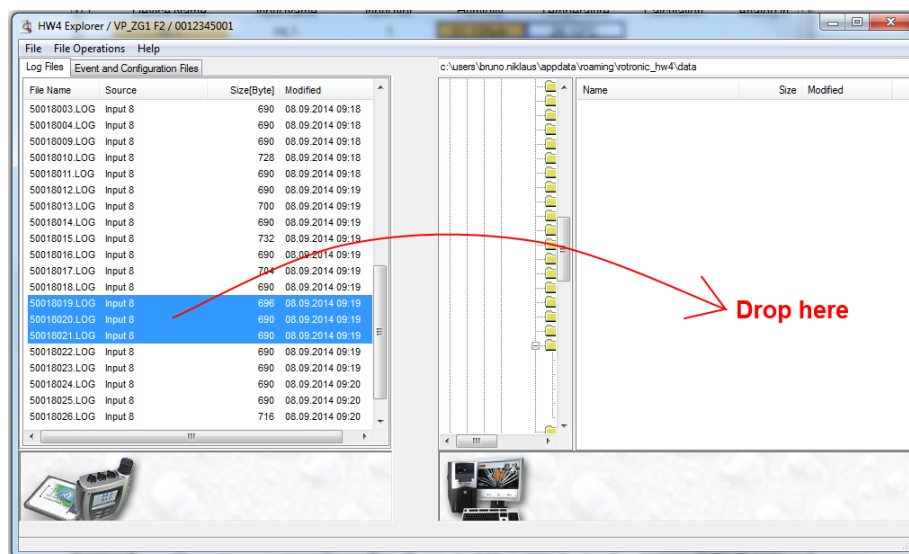
Note:

PDF is automatically saved as protected PDF file (read only).

- Every parameter can be displayed in individual chart.



- HL-NT data download: download of multiple files using drag&drop.



Bugs fixed:

- Water activity: decimal point is wrong when HW4 online logging is active. Bug affects only .log-files. (e.g.: 40%RH was saved as 0.004aw, instead of 0.4aw)
- Protocol generation of HF520 is not working.
- Wrong updated FDA information by temperature group adjustment.
- HL-20: writing of new log-settings changes start / stop time.
- Correct dialogs for low dew point probes connected to HF transmitters, HP indicators, etc
- Firmware updates with .ROF files can be done when .ROF file or folder is write protected

Known bugs:

- None

Notes:

- none

Windows Compliance:

Windows XP (32 & 64-bit), Windows Vista (32 & 64-bit),

Windows 7 (32 & 64-bit), Windows 8 (32 & 64-bit)

Release notes

HW4 Software Version 3.4.2

Change control

HW4 version 3.4.2 includes all the functions and features of HW4 version 3.4.1 with the following modifications and additions:

Enhancements:

- HL-1 / TL-1 devices work with USB3 on Windows 7.

New features

- None

Bugs (V3.4.1) fixed:

- HL-1 / TL1: Downloaded data from data logger isn't displayed correctly.
Data below -17.7 °C (0 °F) isn't displayed in the graph.
- HL-1 / TL1: Alarm configuration didn't work properly in Windows region and language settings with “,” as separator.
- General: IP addresses starting 1...9 (e.g.: 5.xxx.xxx.xxx) have been declared as invalid.
Therefore devices could not be found manually.

Known bugs:

- None

Notes:

- none

Windows Compliance:

Windows XP (32 & 64-bit), Windows Vista (32 & 64-bit),
Windows 7 (32 & 64-bit), Windows 8 (32 & 64-bit)

Release notes

HW4 Software Version 3.4.1

Change control

HW4 version 3.4.1 includes all the functions and features of HW4 version 3.4.0 with the following modifications and additions:

Enhancements:

- None

New features

- None

Bugs (V3.4.0) fixed:

- Downloaded data from HL-1 / TL-1 logger isn't displayed correctly. Data below 22°C is not displayed in the graph. The bug is fixed in Version v3.4.1.

Known bugs:

- None

Notes:

- none

Windows Compliance:

Windows XP (32 & 64-bit), Windows Vista (32 & 64-bit),
Windows 7 (32 & 64-bit), Windows 8 (32 & 64-bit)

Release notes

HW4 Software Version 3.4.0

Change control

HW4 version 3.4.0 includes all the functions and features of HW4 version 3.3.0 with the following modifications and additions:

Enhancements:

Devices

- **PF4 with HC2 probe**

The PF4 provides an optional E2 connector. This allows to measure differential pressure, humidity and temperature.

PF4 supports the same probe functions as HF8:

- HC2 calibration, same function as HF5
- HC2 adjustment, same function as HF5
- Analog input, can be selected instead of the HC2 digital probe, equal function as HF8.
- Psychrometric calculations, all psychrometric parameters can be calculated.

- **Data logger: HL-1 / TL1**


With the release of the HW4 v3.4.0 ROTRONIC will launch a new data logger, HL-1 / TL-1.

- Simple standalone data logger
- Can be used with HW4-LITE (free version)
- Humidity adjustment
- No group adjustment

New features

○ Automatic AW-report generation

AW-reports can be automatically generated by ticking the box.

		Input Name	Probe S/N	H	Humidity	T	Temperature	Elapsed Time
<input checked="" type="checkbox"/>		HL1	0000000000		30.78%rh		23.55°C	00:00:42

Batch Number

Product Name

Comments


Start

Stop

Generate report

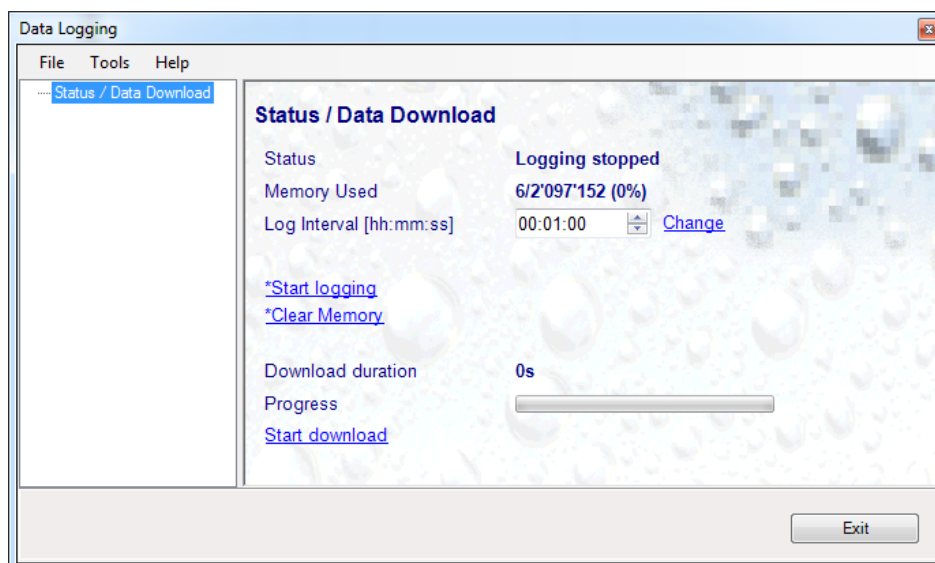
*Auto-Generate report

*Activate ☒

*Save path 

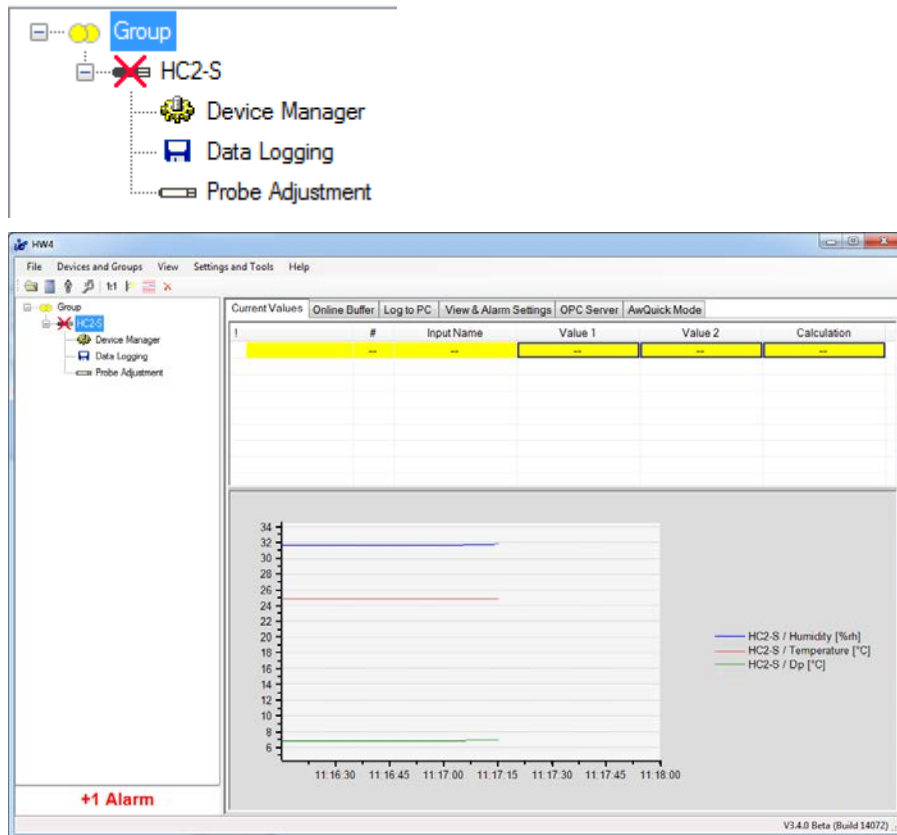
○ Start/ Stop of wireless loggers via HW4

Data logging can be started and stopped by the HW4 software.



- **Communication alarm visualization**

Communication alarms are visualized like all other alarms in the group logo and by changed background color.



- **Alarm notification on desktop can be enabled / disabled**

The alarms shown in the desktop can be enabled or disabled by type. The feature affects only the desktop visualization. All alarms are tracked in the alarm table.

Global Alarm Settings

Archive Alarm Records after [Months]	<input type="text" value="3"/>
Archive File Size Limit	<input type="text" value="10000"/>
Run Control Timeout [min]	<input type="text" value="15"/>
Test Alarm Interval [Hours]	<input type="text" value="24"/>

[Run a Test Alarm](#)

Color Settings

Low Priority Color	<input type="color" value="yellow"/>
Mid Priority Color	<input type="color" value="orange"/>
High Priority Color	<input type="color" value="red"/>

*Alarm Notifications

<input checked="" type="checkbox"/> Software Error	<input checked="" type="checkbox"/> Communications Error
<input checked="" type="checkbox"/> Log to PC Path Error	<input checked="" type="checkbox"/> Out-of-Limit Value
<input checked="" type="checkbox"/> Run Control	<input checked="" type="checkbox"/> Battery
<input checked="" type="checkbox"/> Test Alarm	<input checked="" type="checkbox"/> Power Supply
	<input checked="" type="checkbox"/> Sensor
	<input checked="" type="checkbox"/> Device set to generate fixed Values
	<input checked="" type="checkbox"/> Memory Card

Email Settings

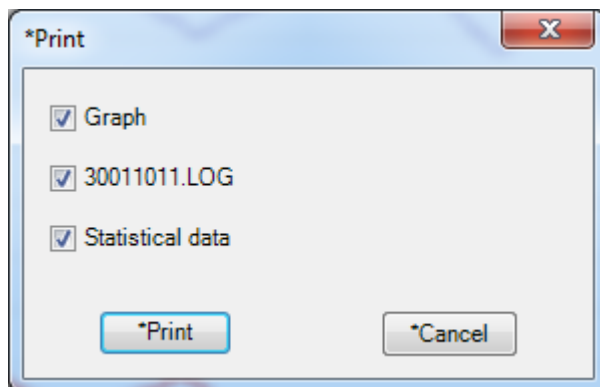
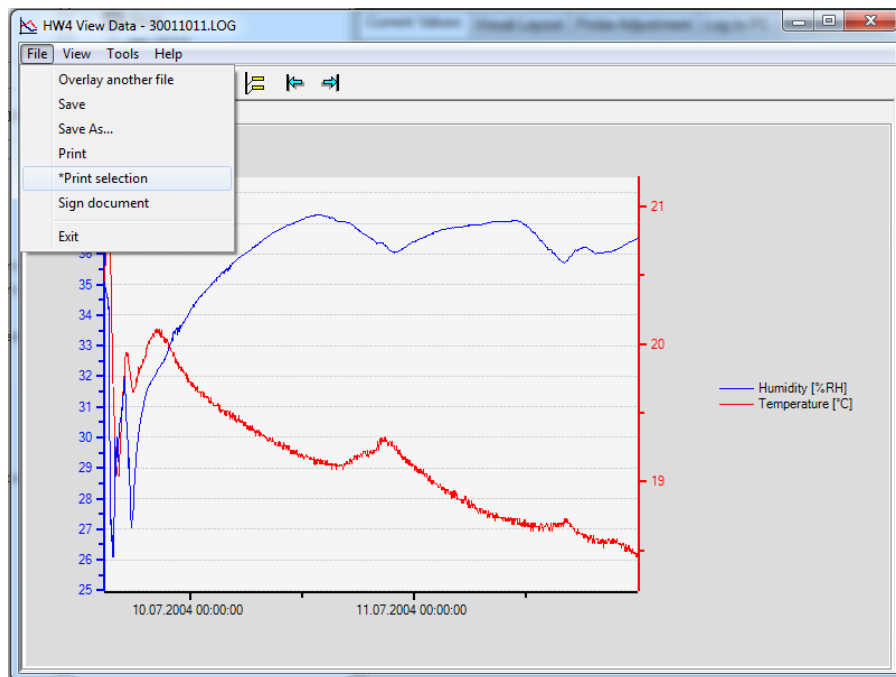
<input type="radio"/> MAPI	Requires MS Outlook	
<input checked="" type="radio"/> SMTP	Server Name	<input type="text" value="example.smtp.com"/>
	User Name	<input type="text" value="username"/>
	Password	<input type="password" value="....."/>
	Sender Address	<input type="text" value="Alarm@HW4.com"/>
	SSL enable	<input type="checkbox"/>

[Send a Test Email](#)

- **Layout view: device label position and background image are independent for every group and sub-group**

- **Graph view: graph, log-file, statistical data can be printed at the same time**

To simplify printing of log-files the HW4 software provides a new function "Print selection". This allows to print graph, log-file data and statistical data at the same time.



- **SW21: V1.1.1 is integrated**

ROTRONIC MEASUREMENT SOLUTIONS

- New ROTRONIC logo “Measurement solutions” is used.



Bugs (V3.3.0) fixed:

- **CO2-display: LOG-file is displayed correctly**
HW4 v3.3.0 generated wrong time line, starting with 1900 as first date.
- **Wireless data logger: device protection didn't work correctly**
Devices with access code >7FFF couldn't be locked or unlocked.
- **Wireless data logger – temperature low limit**
In HW4 v3.3.0 the temperature low limit couldn't be set. This bug is fixed with the v3.4.0.
- **Temperature adjustment – group adjustment**
If the temperature adjustment is started in a different temperature than the captured value the calibration will be wrong.

Known bugs:

- None

Notes:

- none

Windows Compliance:

- Windows XP (32 & 64-bit), Windows Vista (32 & 64-bit),
Windows 7 (32 & 64-bit), Windows 8 (32 & 64-bit)

Release notes

HW4 Software Version 3.3.0

Change control

HW4 version 3.3.0 (validated & not validated version) includes all the functions and features of HW4 version 3.2.0 with the following modifications and additions:

Enhancements:

Devices

- Software version is ready for use with the new ROTRONIC low dew point probe.

New features

- **HW4-Lite**

HW4-Lite supports up to three connected HC2-WIN-USB devices or three HL-20 data loggers. Measurements are observed simultaneously on a PC.

- **Alarm visualization (for all versions of HW4)**

Alarms are indicated visually with different colors depending on their priority.

Default settings:

- Priority 1 – red
- Priority 2 – orange
- Priority 3 – yellow

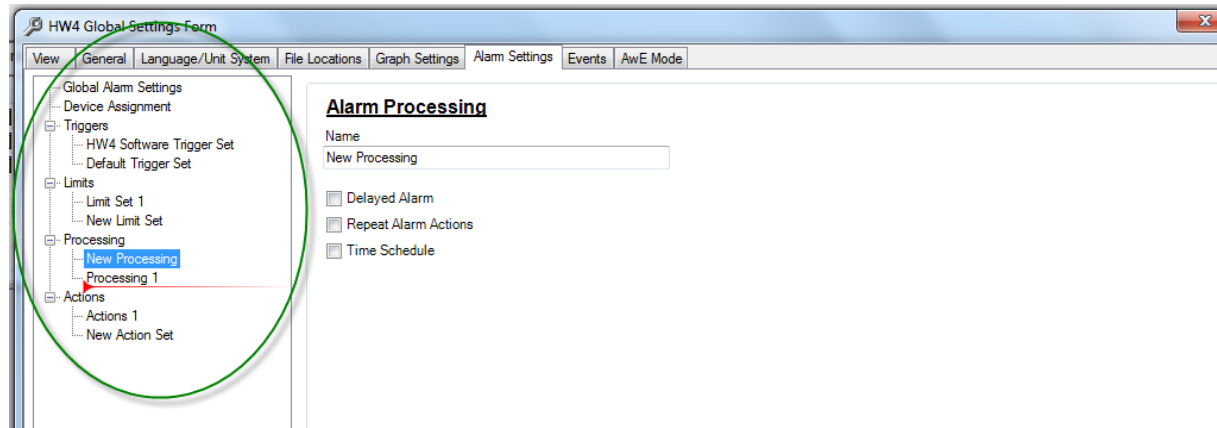
The default colors can be changed by the user.

- **Search function for alarm table (for all versions of HW4)**

- Enables alarm search by text.
- Enables alarm search by date.

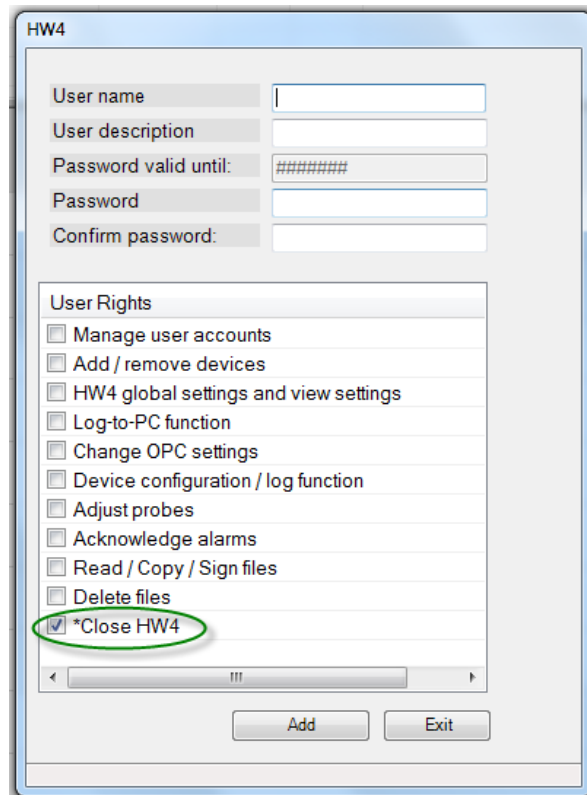
- **Alarm overview in Global Settings (for all versions of HW4)**

Alarms can be organized by “drag & drop” in global alarm settings.



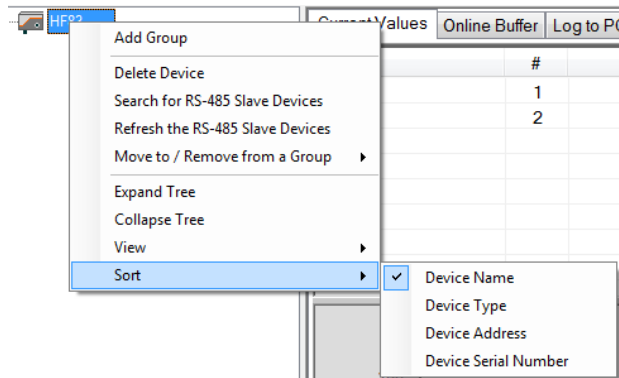
- **Shutdown protection (for all versions of HW4)**

User rights for HW4 shutdown can be set within User Management. If enabled, a password is required to close HW4 software.



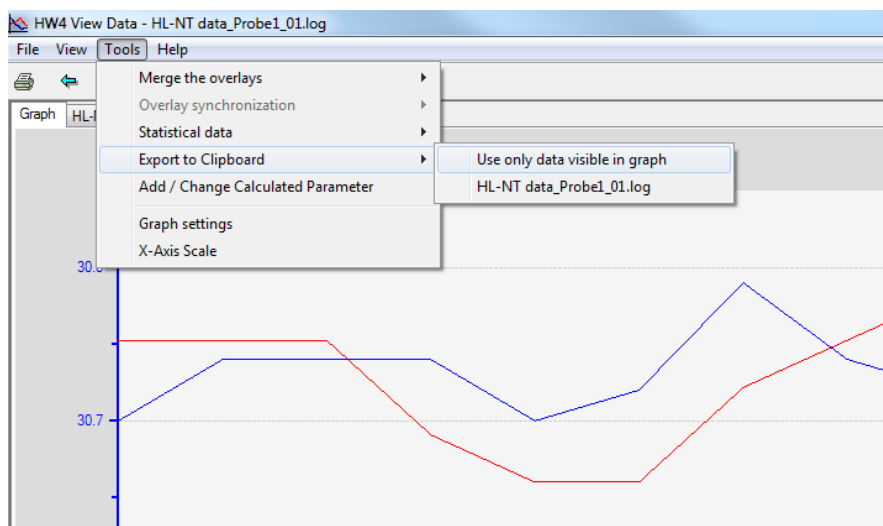
- **Sorting of devices in groups and subgroups (for all versions of HW4)**

Devices in subgroups can be created and organized by device name, address, type or description.



- **Export of PC screen visible data for .LOG files (for all versions of HW4)**

HW4 allows the direct export of currently visible data to the Clipboard, the data can then be pasted into a .xls (Excel) file.



- **Temperature adjustment of wireless loggers (for all versions of HW4)**

(LOG-PT1000-RC / LOG-PT1000-RC-US / LOG-PT1000-ET030-RC / LOG-PT1000-30-RC-US)

The Pt100 temperature sensor can be adjusted using HW4 software.

Bugs fixed:

- **SMS alarm**
Device name is included in the text message.
- **E-mail alarm**
SSL server can be used for e-mail alarming.
- When Group Adjustment is used the protocol will be saved in the correct directory.

Known bugs:

- **Wireless data loggers:** The device "low alarm" limit for temperature can't be changed. Enabling / disabling is possible.

Affected devices: all types of LOG-HC2-xx-RC and LOG-PT1000-xx-RC

Workarounds:

- Use HW4 v3.2.1 or v3.2.0 in the application.
- Use HW4 v3.2.1 or v3.2.0 to change the "low alarm" limit and use v3.3.0 for monitoring.
- Instead of the device alarm use software alarms for monitoring (Online Monitoring is not recommended due to battery lifetime). Software alarm limits in local logger files will not be displayed.

Notes:

- none

Windows Compliance:

- Windows XP (32 & 64-bit), Windows Vista (32 & 64-bit),
Windows 7 (32 & 64-bit), Windows 8 (32 & 64-bit)

Release notes

HW4 Software Version 3.2.0

Change control

HW4 version 3.2.0 includes all the functions and features of HW4 version 3.1.0 with the following modifications and additions:

Windows 8

HW4 works with WIN8 but the driver signature enforcement must be disabled.

Enhancements:

Devices

- HF1
- CP11

New features

- **Device Configuration Tool for devices not based on the HygroClip technology**

In the main menu bar of HW4, the menu item Settings and Tools gives access to a new item named Device Configuration Tool.

The Device Configuration Tool is used to configure a number of devices that are not based on the HygroClip technology and do not appear in the HW4 Device Tree. Such devices include but are not limited to the HF1 transmitter, the CP11 indicator, etc. Depending on the device, the tool also gives access to functions such as adjustment, data recording, etc.

- **Custom calculations with the HF8 transmitter**

Device Manager for the HF8 transmitter now allows the user to define up to two custom calculations based on measured values such as relative humidity or on calculated parameters such as the dew point. Custom calculations are constantly updated by the HF8 and can be shown on the local display and / or displayed on the monitor of a PC running the HW4 software.

A custom calculation can be associated with any of the HF8 inputs. When associated with an input, the custom calculation can be associated with any of the HF8 analog outputs. The user can also define low and high limits for a custom calculation and use these limits to generate an alarm and to energize a relay.

- **Water activity measurement**

Water activity probes such as the HC2-AW-USB can now be put within a group to the purpose of making simultaneous measurements with several probes without having to switch from one probe to the other.

The AwQuick Mode / AwE Mode tab located in the right pane of the HW4 main screen has been entirely reworked. The form displayed by this tab allows the user to enter a batch number, a product name and comments. This information will appear in the measurement report.

The water activity measurement report can now be signed by the user. A signed report cannot be modified.

- **Acknowledgement of Alarms**

When acknowledging an alarm, the user has the option of entering an "acknowledgement text" or comment. As a means of facilitating the entry of repetitious comments, the different texts entered by the user are retained by HW4 and are presented as a list from which the user can choose.

- **Time Change Event**

HW4 now makes an entry in the User Events file whenever the PC time clock is changed by more than 5 minutes while HW4 is running.

- **Adding or Removing a Device from a Group:**

As with previous versions of HW4 professional devices can be dragged with the mouse into a group or dragged out of a group (assuming that at least one group has been created prior to this). HW4 v. 3.2.0 offers the additional option of using the device menu to do the same. To open this menu, select the device with the mouse and right click.

- **Automatic download to the HW4 PC of logger data files**

The automatic download to the HW4 PC of logger data files was previously only available with the HL-NT data logger series. This function is now also available with the LOG RC wireless data logger series.

- **HW4 View Data**

Can be used to open a file consisting of recorded data and can also be used to print a graph. Additional information such as Process Name, Device Name, etc. can now be printed on the same page as the graph. This information can be selected in HW4 Global Settings > Graph Settings Tab.

- **OPC Tags (HW4 Professional with OPC Server)**

The OPC Tags are now compatible with 64-bit systems

Bugs fixed:

- Correct indication of the HTS3 transmitter in the product tree
- HL20: **"Display always on" button** exists now in the device manager
- HL20 log files are no longer editable
- Context windows under win7 are sometimes cut, this will no longer happen
- Alarm email: Sender now changeable

Known bugs:

- none

Notes:

Windows Compliance:

- Windows XP, Windows Vista, Windows 7 64 bit, Windows 8